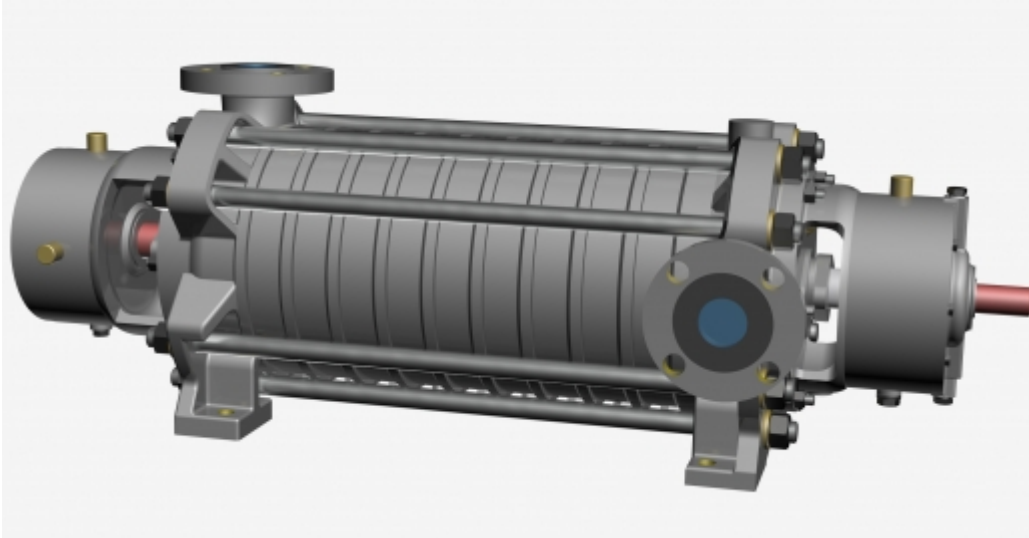


WPZ-50



DOWNLOAD



Catalog



2D



3D

SAVE TO PDF / PRINT

PUBLICATION - 2017-11-07

TYPICAL APPLICATIONS

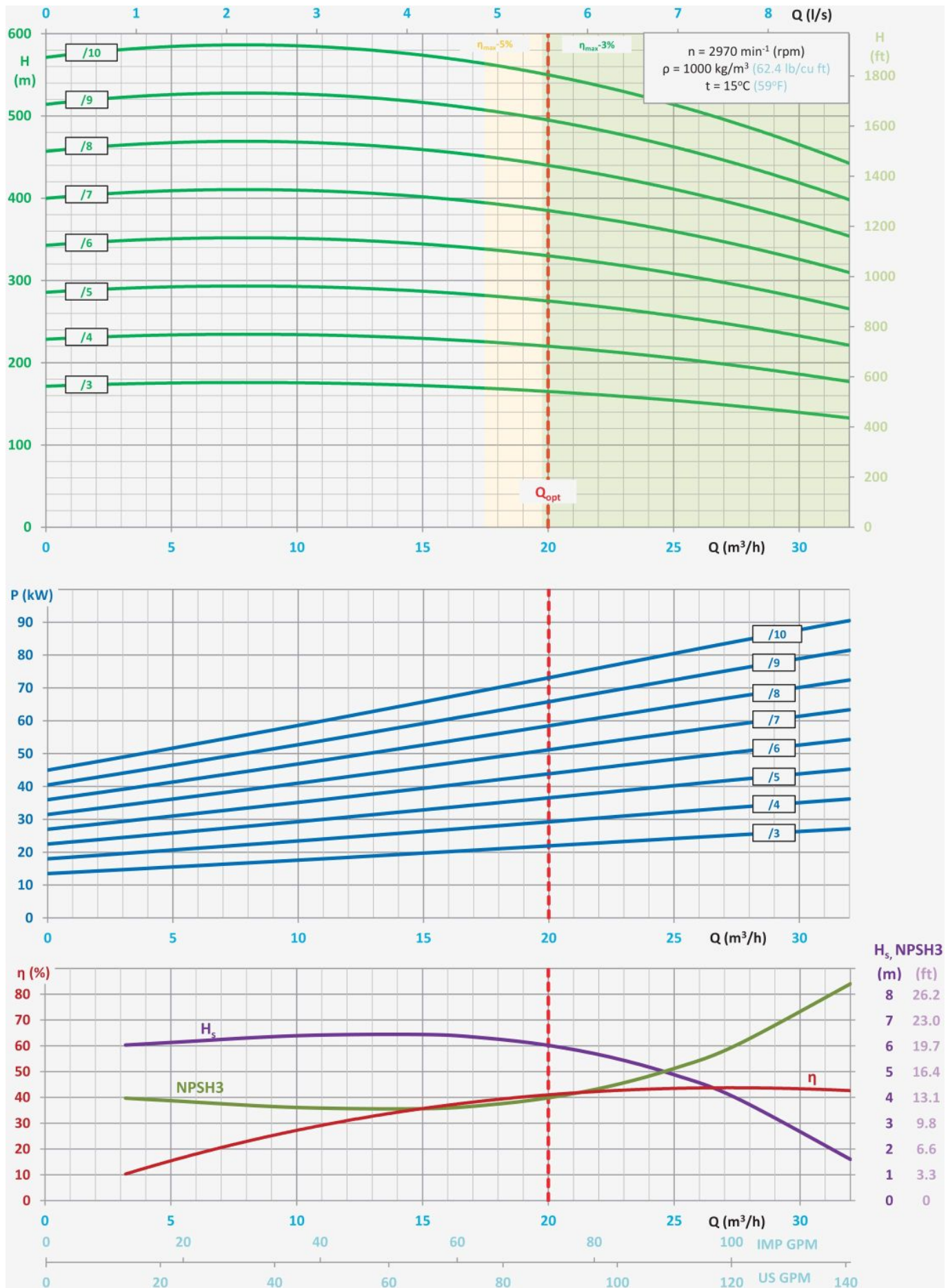
- pumping of pure or mechanically contaminated water with solids with the grain size of up to 2 mm,
- mining - spraying systems of the mining head,

- pressure boosting,
 - technological processes,
 - industrial systems,
 - filtration systems.
-

KEY ADVANTAGES

- long life ensured by the use of state-of-the-art corrosion and erosion resistant materials,
 - silent and smooth operation,
 - connection dimensions in compliance with medium pressure drainage pumps,
 - inflow and suction operation,
 - compact and modern design,
 - approved for operation in explosion-hazard zones – ATEX Ex I M2.
-

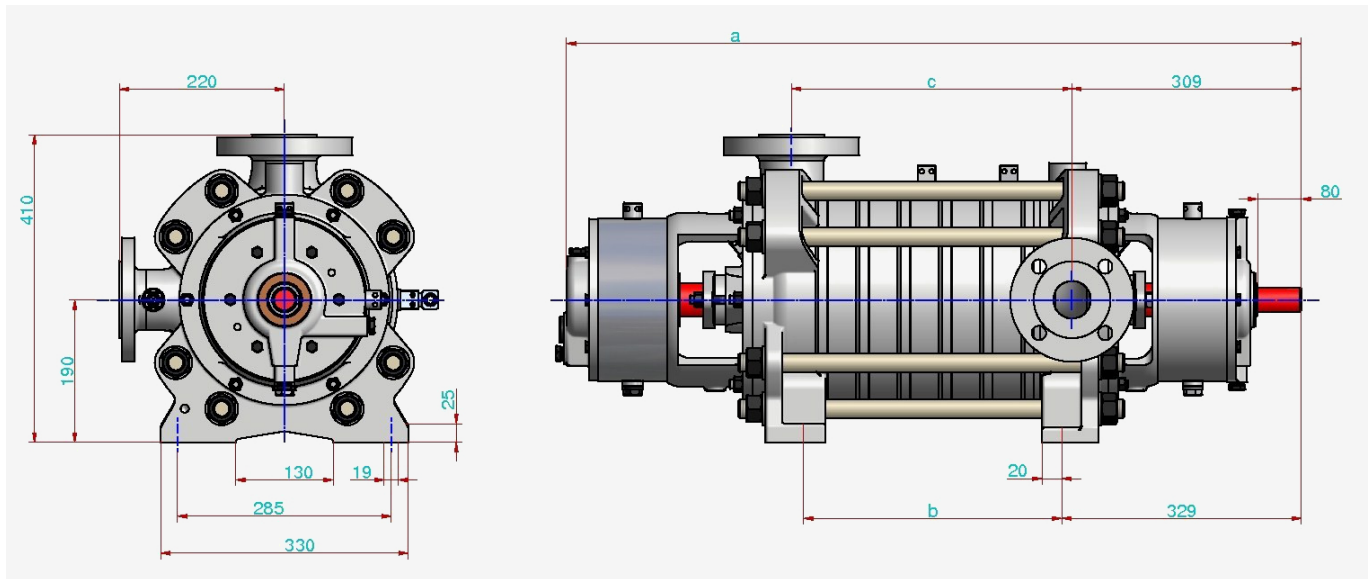
PUMP PERFORMANCE CURVE



- $H = f(Q)$ - lift head acc. to rate flow,

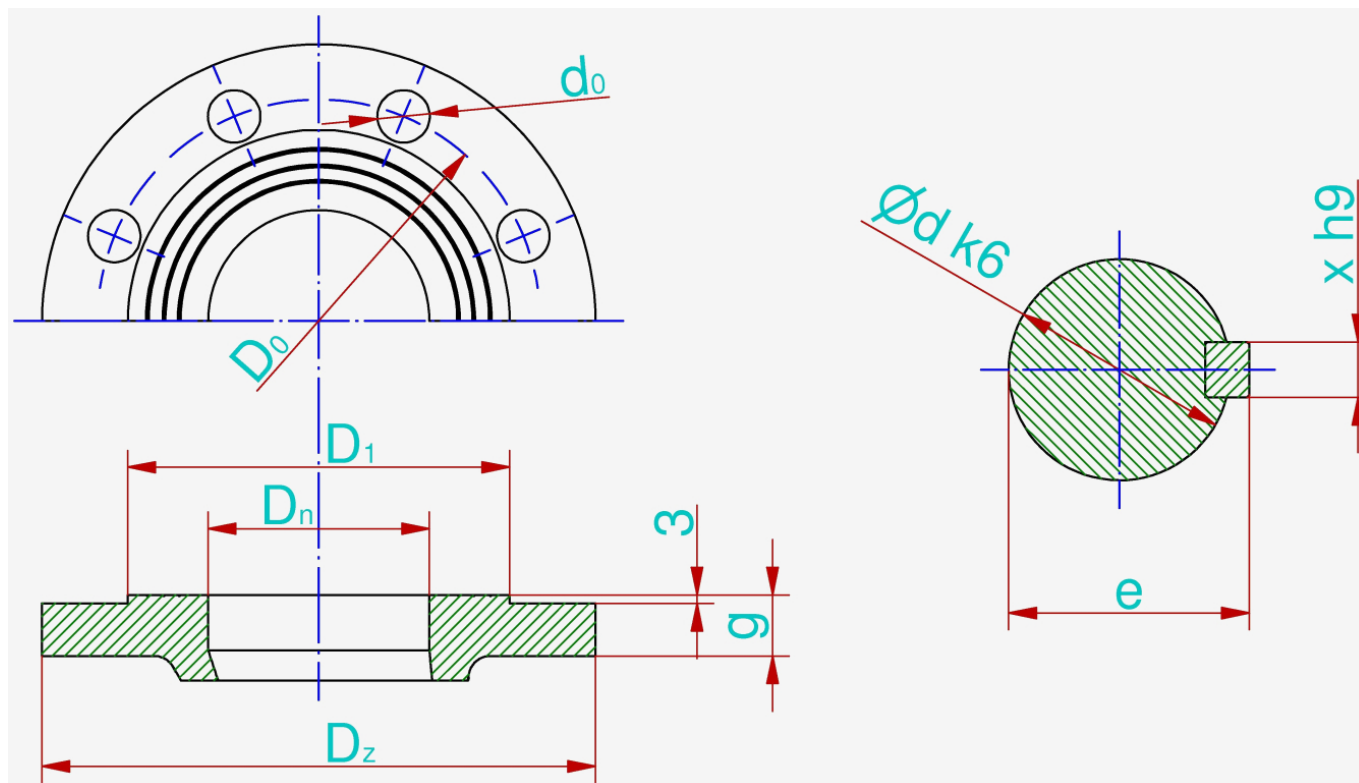
- $P = f(Q)$ - power input acc. to rate flow,
- $\eta = f(Q)$ - efficiency acc. to rate of flow,
- $H_s = f(Q)$ - allowable suction head acc. to rate of flow,
- $NPSH_3 = f(Q)$ - net positive suction head and rate of flow.

MAIN DIMENSIONS OF PUMP



Number of stages									
	3	4	5	6	7	8	9	10	
a	813	868	923	978	1033	1088	1143	1198	mm
b	169	224	279	334	389	444	499	554	mm
c	209	264	319	374	429	484	539	594	mm

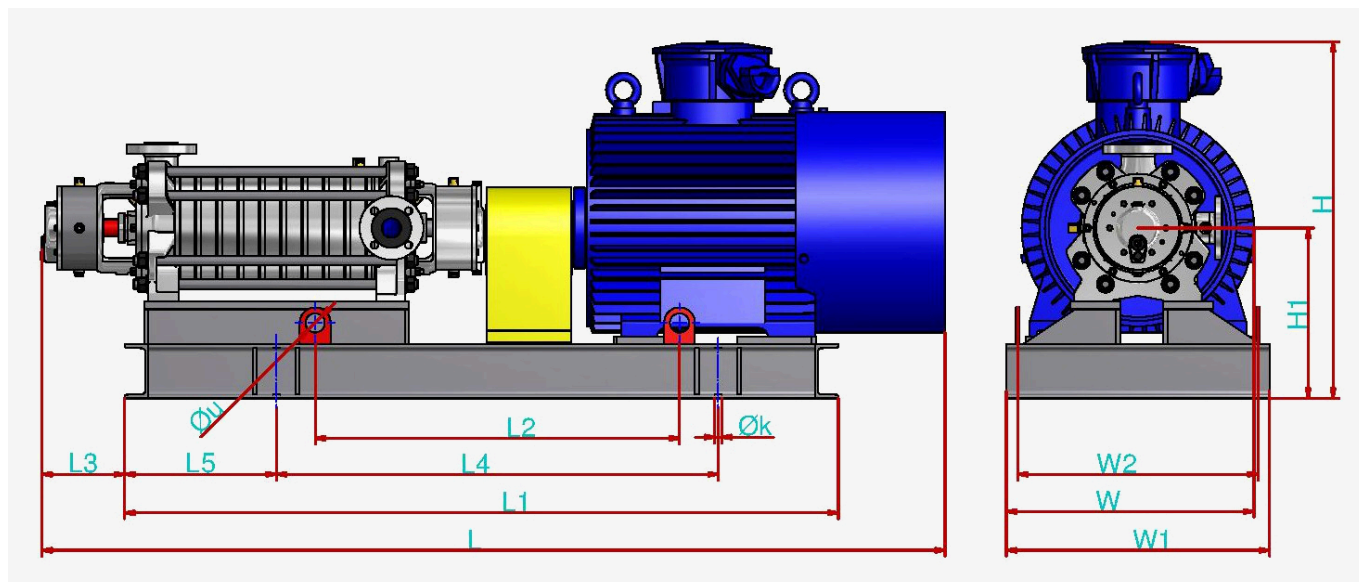
CONNECTION SIZES OF PUMP



	D_n	P_n	D_z	d_0	g	D_0	D_1	i	d	e	x
Suction connector	50	16	165	19	20	125	102	4	-	-	-
Discharge connector	50	63	180	23	28	135	87	4	-	-	-
Shaft / coupling	-	-	-	-	-	-	-	-	32	35	10
	mm	bar	mm	mm	mm	mm	mm	-	mm	mm	mm

The flanges are normally made in accordance with the standard PN-EN 1092-1 or PN-EN 1092-2.

MAIN DIMENSIONS OF PUMP UNIT



	Number of stages								
	3	4	5	6	7	8	9	10	
L	1680	1735	1810	1955	2010	2215	2270	2325	mm
L ₁	1305	1360	1430	1585	1640	1780	1835	1890	mm
L ₂	635	665	705	805	835	915	945	970	mm
L ₃	180								mm
L ₄	815	840	885	980	1010	1090	1120	1145	mm
L ₅	220	250	275	300	330	360	385	415	mm
W	515	515	560	605	305	670	670	670	mm
W ₁	560	560	605	655	655	720	720	720	mm
W ₂	485	485	530	580	580	645	645	645	mm
H	720	720	765	810	810	885	885	885	mm
H ₁	320	320	345	370	370	400	400	400	mm
Weight	590	610	720	810	830	1020	1040	1100	kg
Coupling type (Rex Viva)	V-130	V-130	V-130	V-150	V-150	V-150	V-150	V-170	-
Motor type (Celma)	dSg200L2A-EP	dSg200L2A-EP	dSg225M2-EP	dSg250M2-EP	dSg250M2-EP	dSg280S2-EP	dSg280S2-EP	dSg280M2-EP	-
Motor power	30	37	45	55	55	75	75	90	kW
Motor weight	300	300	390	450	450	610	610	650	kg

It is possible to produce pumps with parameters different than those presented in the tables and on the graphs per agreement with the manufacturer.