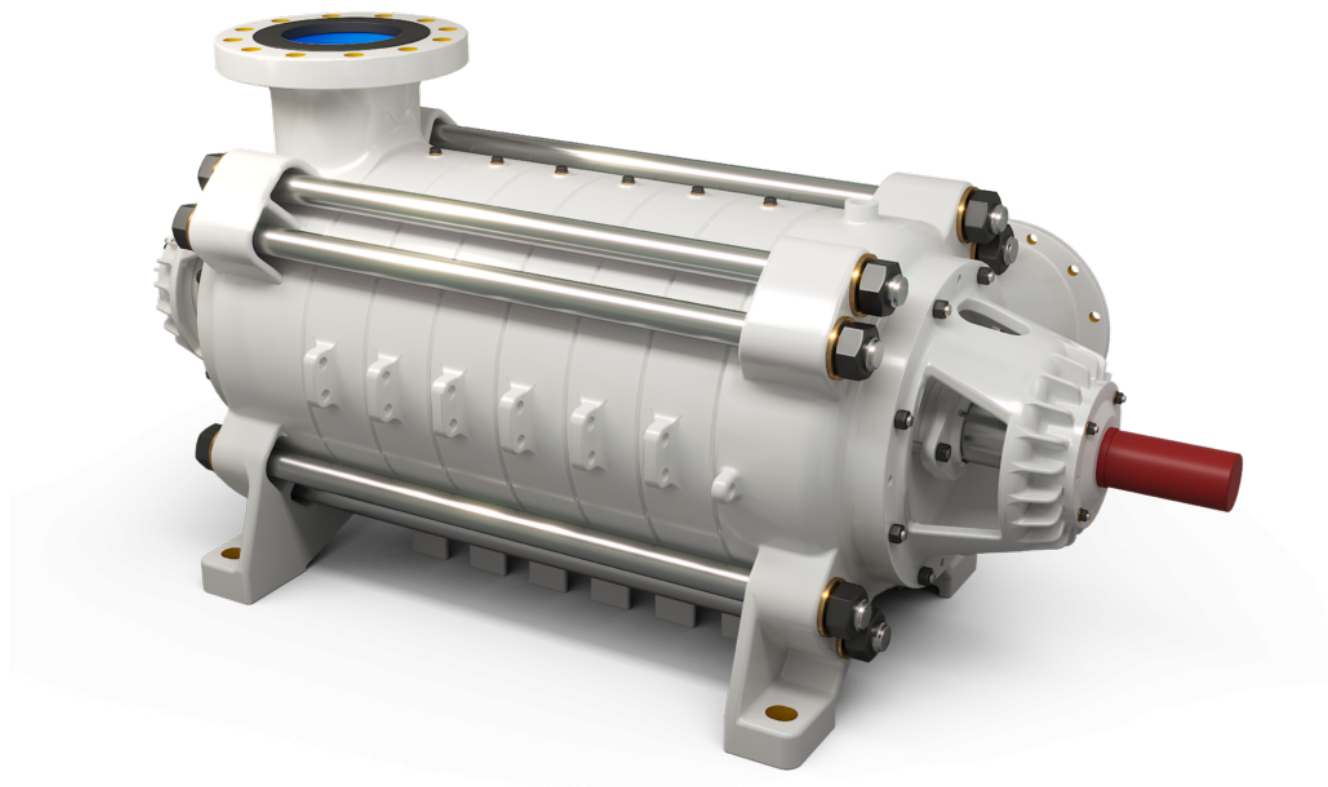


WPWE-200

[Next - WPWE-250](#)



MATERIAŁY DO POBRANIA



Katalog



2D



3D

ZAPISZ DO PDF / DRUKUJ STRONĘ

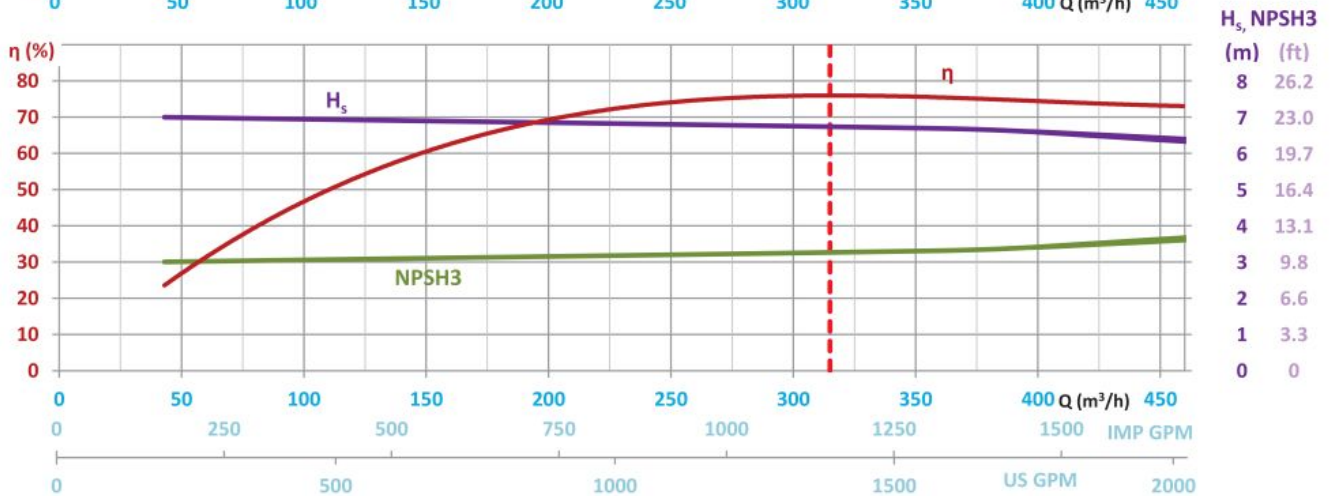
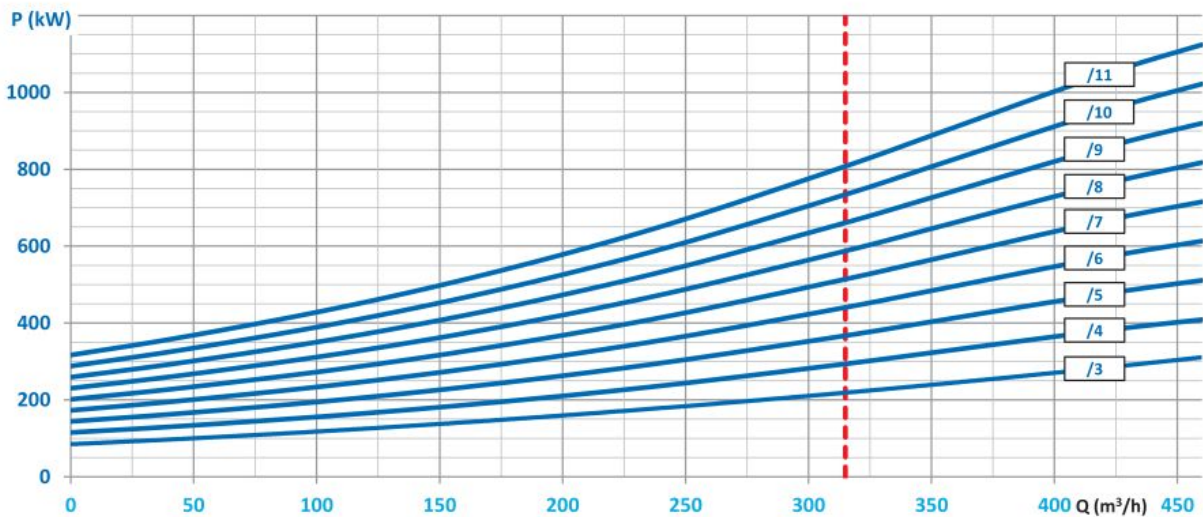
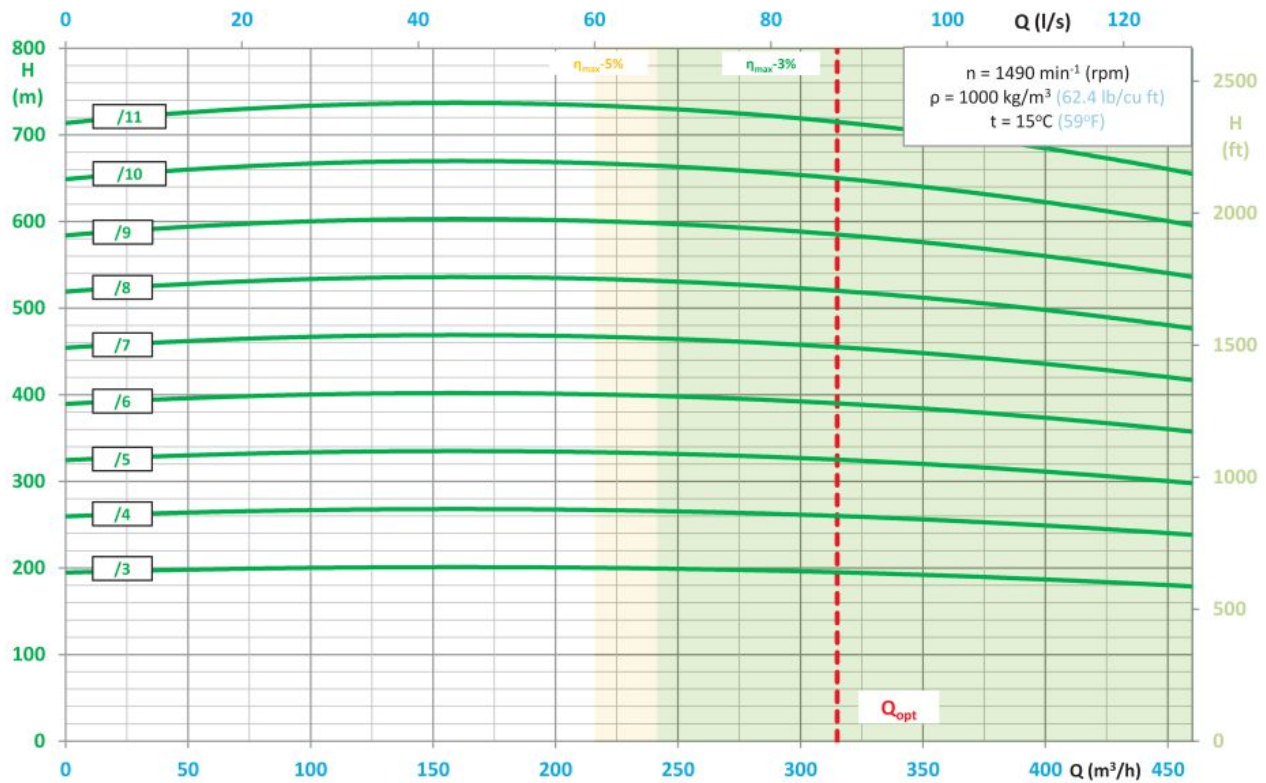
TYPICAL APPLICATIONS

- mining - main and auxiliary dewatering,
- industrial systems,
- technological processes,
- pressure boosting,
- pumping of pure or mechanically contaminated water with solids with the grain size of up to 2 mm,
- coal, copper, salt mines and others.

KEY ADVANTAGES

- new improved design with increased efficiency
- long life ensured by the use of state-of-the-art corrosion and erosion resistant materials (saltresistant workmanship),
- special material execution DUPLEX especially resistant to difficult conditions,
- possibility to use an electronic system of the balance disk wear monitoring,
- approved for operation in explosion-hazard zones - ATEX Ex I M2.

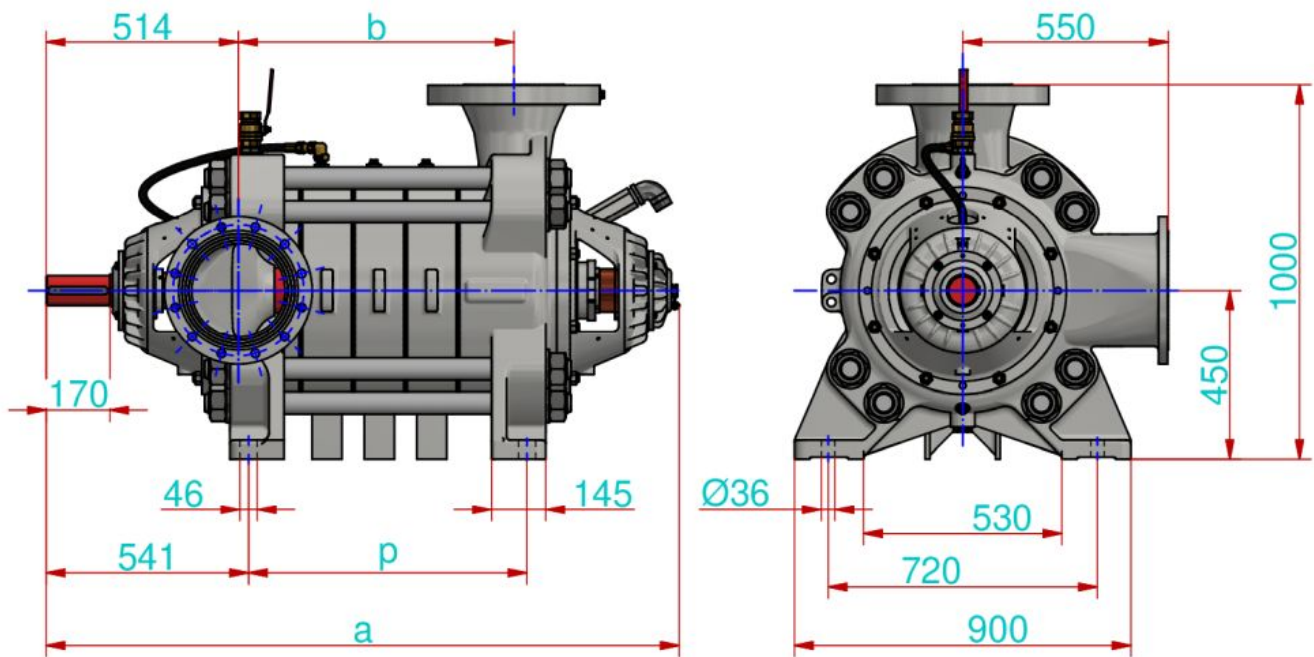
PUMP PERFORMANCE CURVE



▪ $H = f(Q)$ - lift head acc. to rate flow,

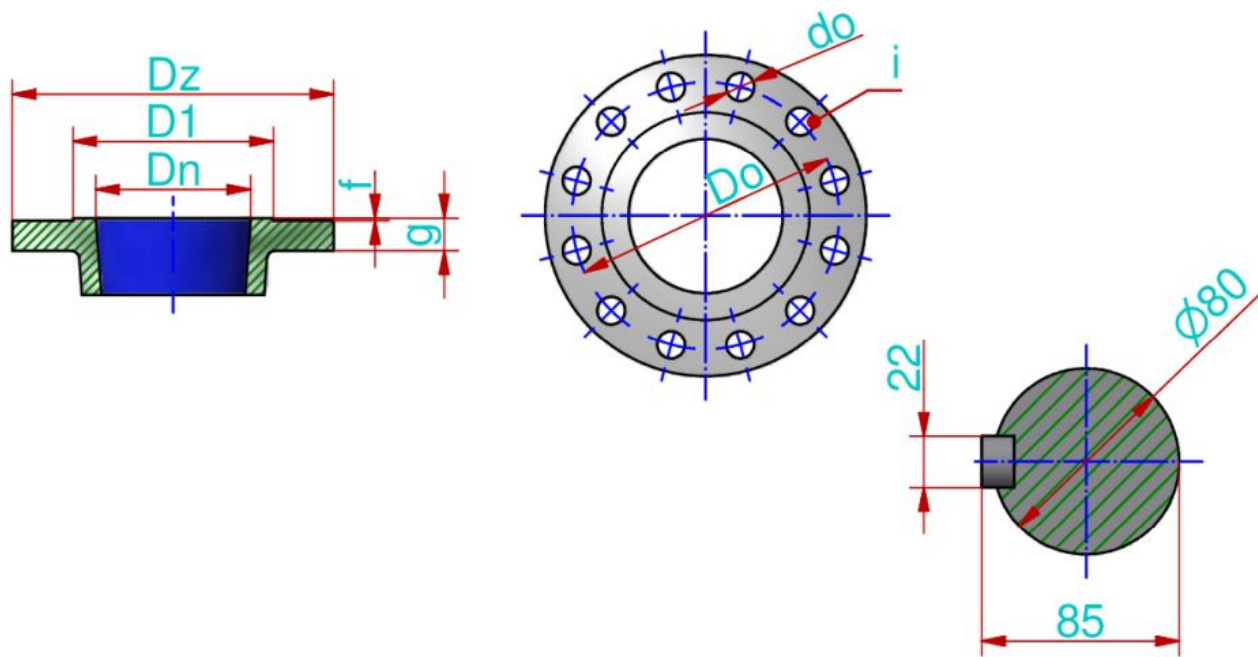
- $P = f(Q)$ - power input acc. to rate flow,
- $\eta = f(Q)$ - efficiency acc. to rate of flow,
- $H_s = f(Q)$ - allowable suction head acc. to rate of flow,
- $NPSH3 = f(Q)$ - net positive suction head and rate of flow.

MAIN DIMENSIONS OF PUMP



	Liczba stopni									
	3	4	5	6	7	8	9	10	11	
a	1555	1695	1835	1975	2115	2255	2395	2535	2675	mm
b	597	737	877	1017	1157	1297	1437	1577	1717	mm
p	605	745	885	1025	1165	1305	1445	1585	1725	mm

CONNECTION SIZES OF PUMP



	D_n	P_n	D_z	d_o	g	f	D_0	D_1	i
Króciec ssawny	250	10	395	22	26	3	350	320	12
Króciec tłoczny PN100 (9-11 stopni)	200	100	430	36	52	3	360	285	12
Króciec tłoczny PN63 (6-8 stopni)	200	63	415	36	42	3	345	285	12
Króciec tłoczny PN40 (3-5 stopni)	200	40	375	30	34	3	320	285	12
	mm	bar	mm	mm	mm	mm	mm	mm	szt

The flanges are normally made in accordance with the standard PN-EN 1092-1.

It is possible to produce pumps with parameters different than those presented in the tables and on the graphs per agreement with the manufacturer.