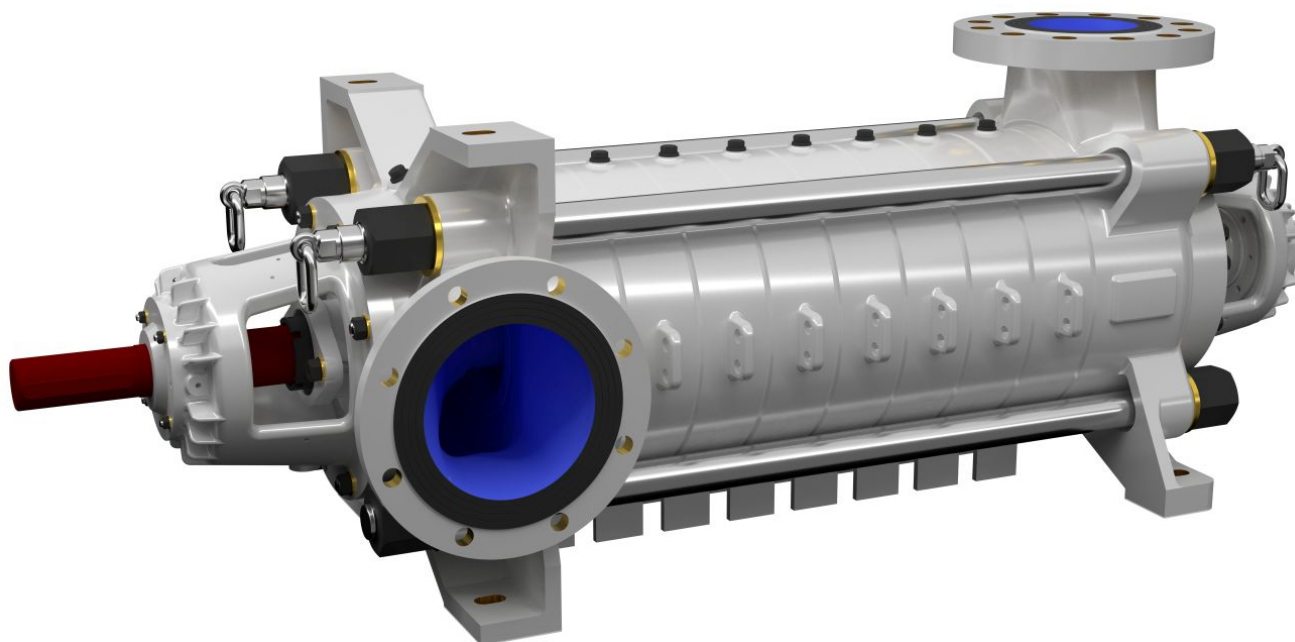


WPWE-150

Następna - WPWE-150



MATERIAŁY DO POBRANIA



Katalog



2D



3D

ZAPISZ DO PDF / DRUKUJ STRONĘ

DATA PUBLIKACJI - 2021-01-07

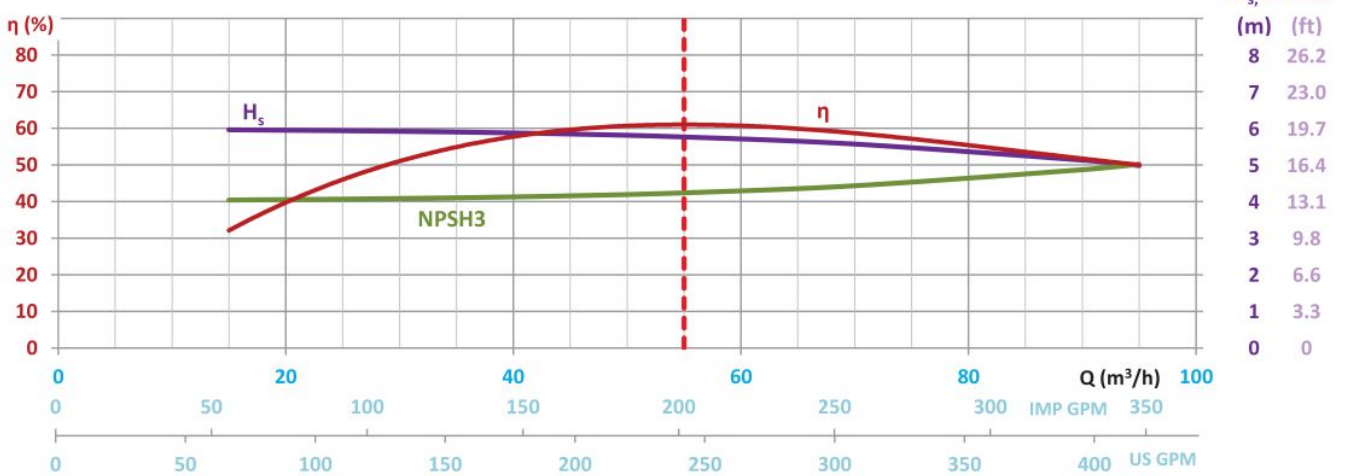
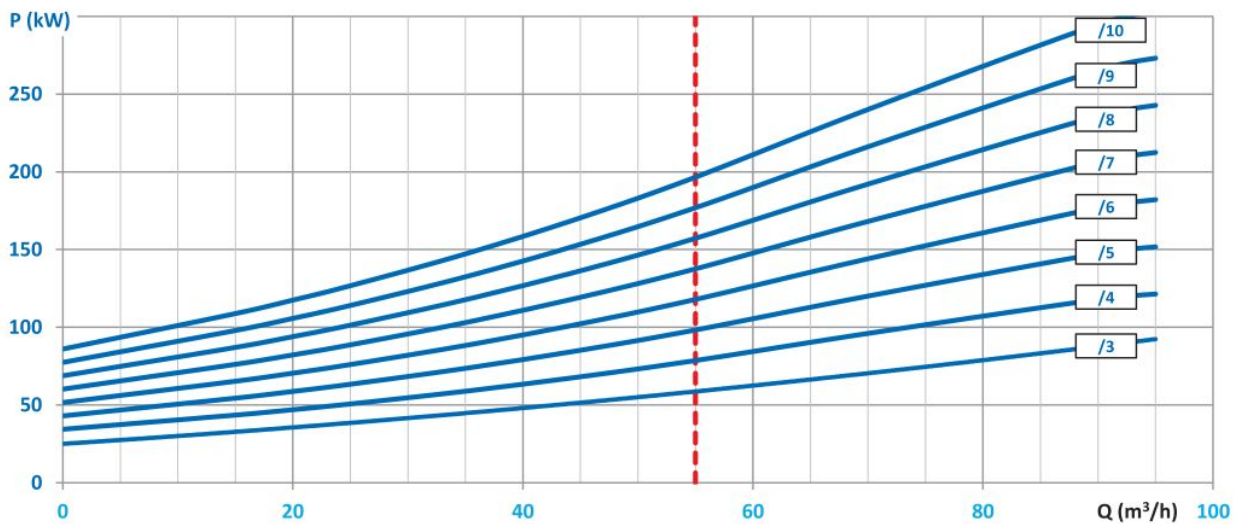
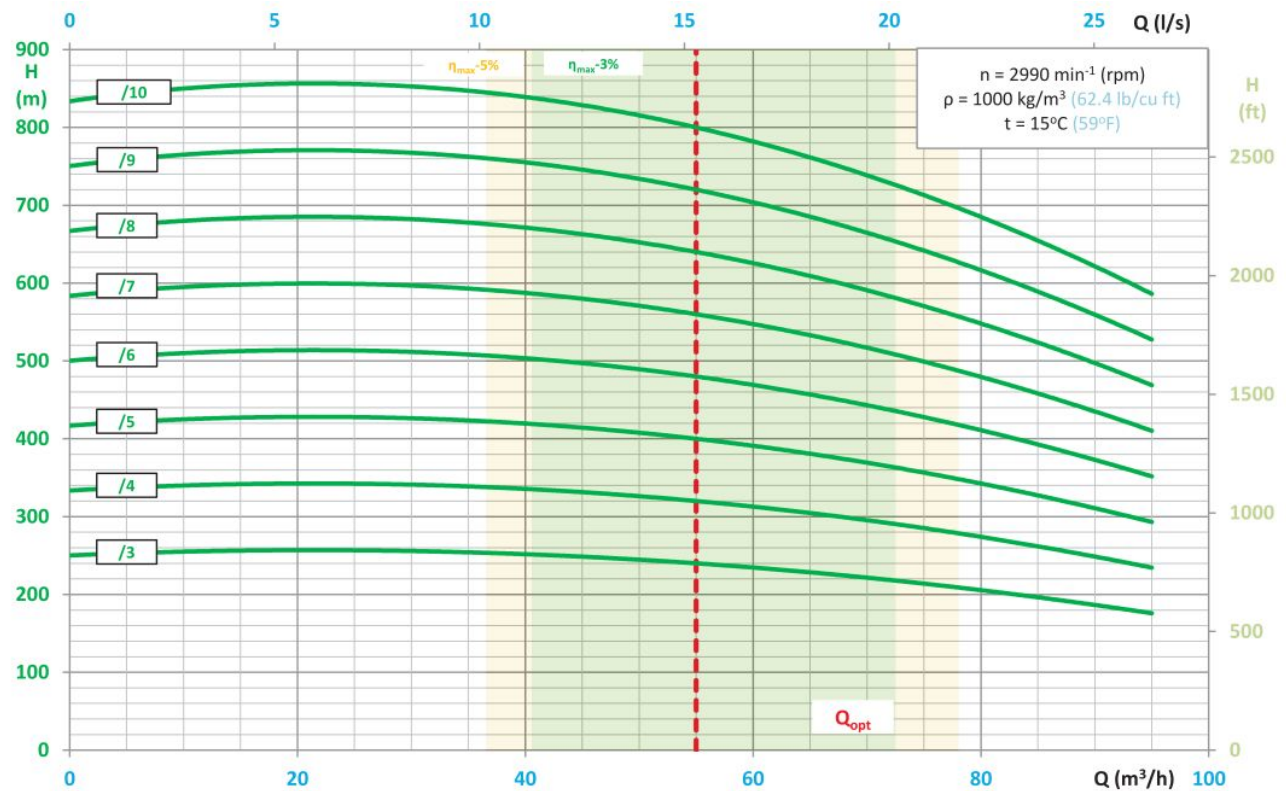
TYPICAL APPLICATIONS

- mining – main and auxiliary dewatering,
 - industrial systems,
 - technological processes,
 - pressure boosting,
 - pumping of pure or mechanically contaminated water with solids with the grain size of up to 2 mm,
 - coal, copper, salt mines and others.
-

KEY ADVANTAGES

- new improved design with increased efficiency
 - long life ensured by the use of state-of-the-art corrosion and erosion resistant materials (saltresistant workmanship),
 - special material execution DUPLEX especially resistant to difficult conditions,
 - possibility to use an electronic system of the balance disk wear monitoring,
 - approved for operation in explosion-hazard zones – ATEX Ex I M2.
-

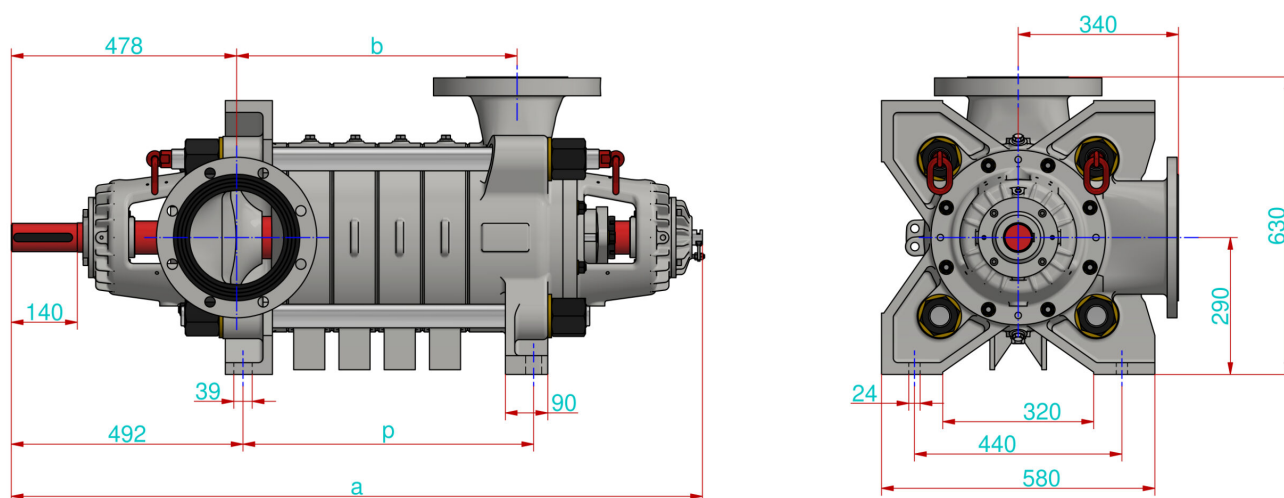
PUMP PERFORMANCE CURVE



- $H = f(Q)$ - lift head acc. to rate flow,

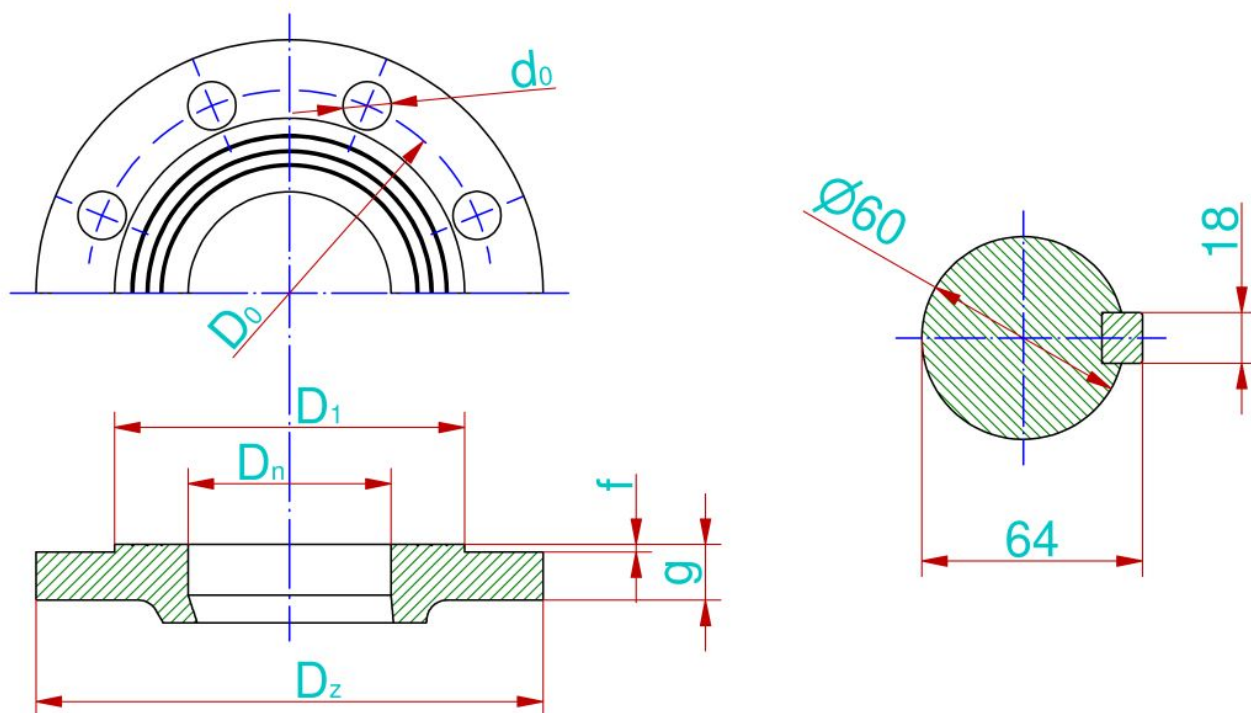
- $P = f(Q)$ - power input acc. to rate flow,
- $\eta = f(Q)$ - efficiency acc. to rate of flow,
- $H_s = f(Q)$ - allowable suction head acc. to rate of flow,
- $NPSH3 = f(Q)$ - net positive suction head and rate of flow.

MAIN DIMENSIONS OF PUMP



	Liczba stopni									
	3	4	5	6	7	8	9	10	11	
a	1268	1364	1460	1556	1652	1748	1844	1940	2036	mm
b	403	499	595	691	787	883	979	1075	1171	mm
p	425	521	617	713	809	905	1001	1097	1193	mm

CONNECTION SIZES OF PUMP



	D_n	P_n	D_z	d_0	g	f	D_0	D_1	i
Króciec ssawny	200	10	340	22	24	3	295	268	8
Króciec tłoczny PN40 (3-5 stopni)	150	40	300	26	30	2	250	218	8
Króciec tłoczny PN63 (6-7 stopni)	150	63	345	33	36	2	280	218	8
Króciec tłoczny PN100 (8-11 stopni)	150	100	355	33	48	2	290	218	12
	mm	bar	mm	mm	mm	mm	mm	mm	szt

The flanges are normally made in accordance with the standard PN-EN 1092-1.

It is possible to produce pumps with parameters different than those presented in the tables and on the graphs per agreement with the manufacturer.