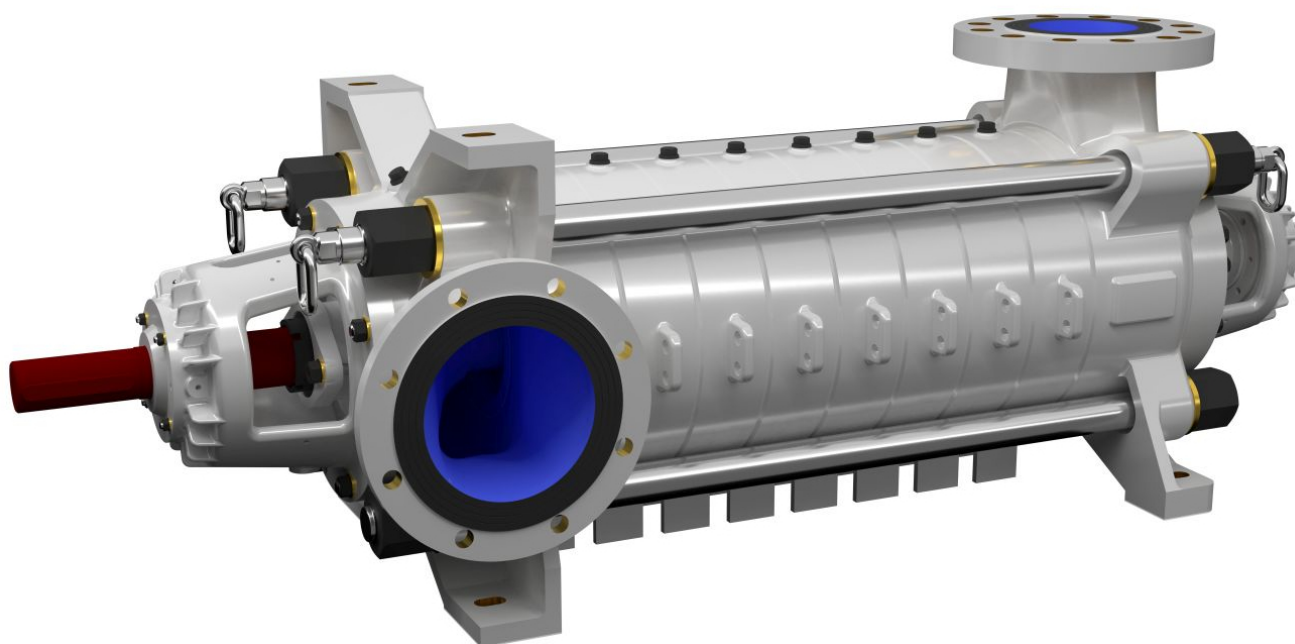


WPWE-100

Następna - WPWE-100



MATERIAŁY DO POBRANIA



Katalog



2D



3D

ZAPISZ DO PDF / DRUKUJ STRONĘ

DATA PUBLIKACJI - 2021-01-07

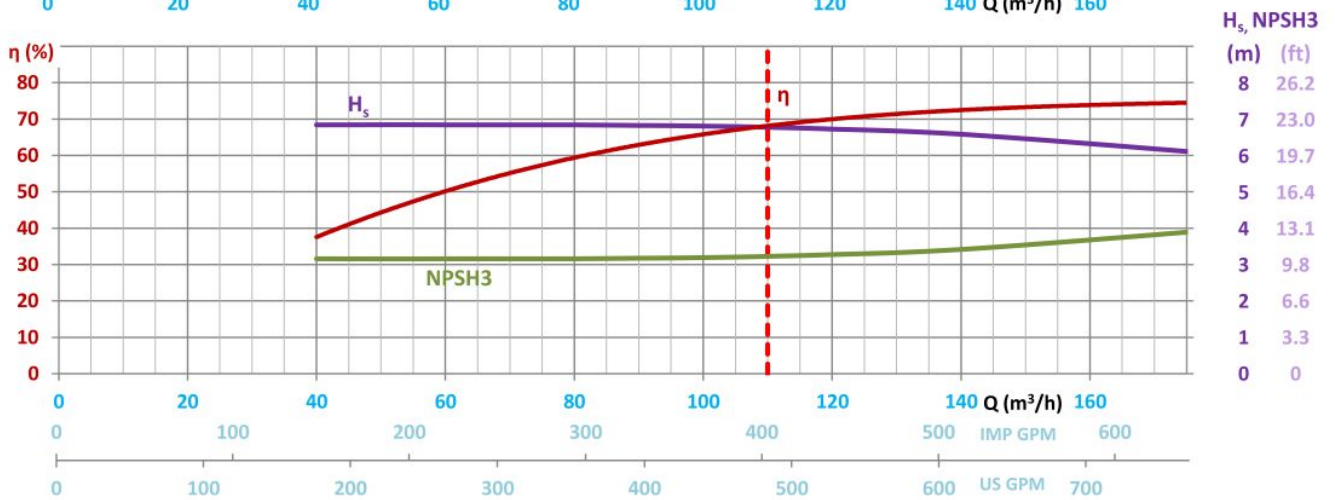
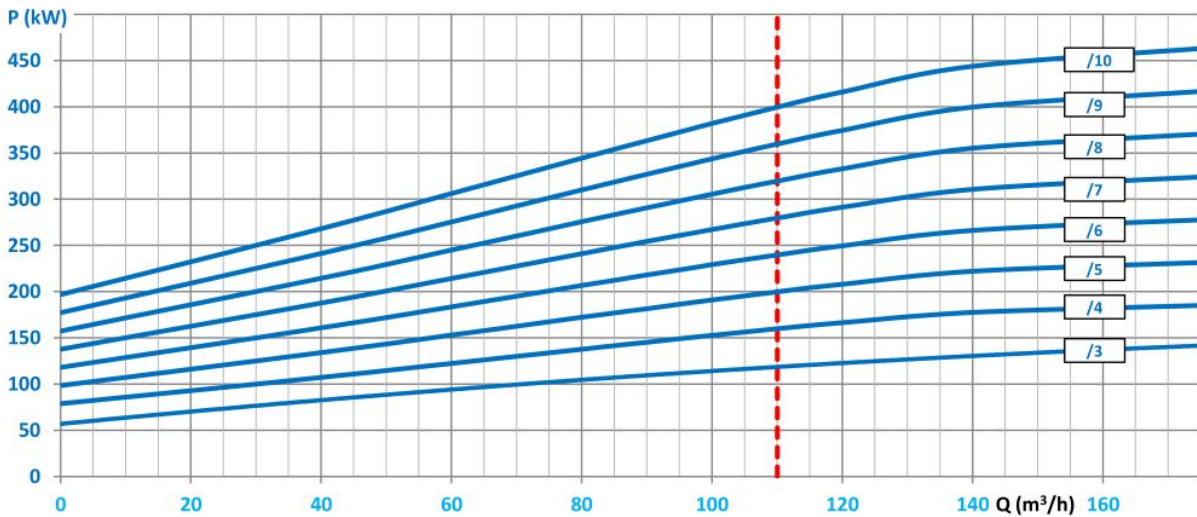
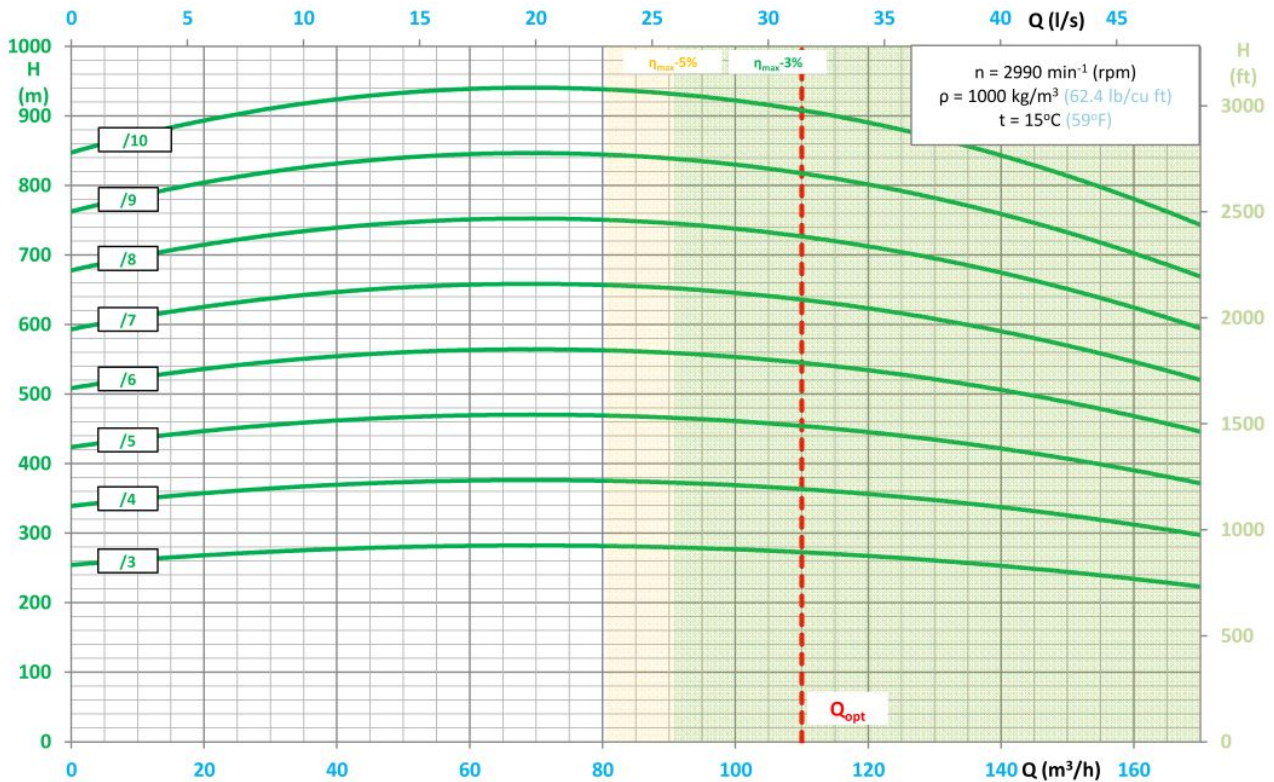
TYPICAL APPLICATIONS

- mining - main and auxiliary dewatering,
 - industrial systems,
 - technological processes,
 - pressure boosting,
 - pumping of pure or mechanically contaminated water with solids with the grain size of up to 2 mm,
 - coal, copper, salt mines and others.
-

KEY ADVANTAGES

- new improved design with increased efficiency
 - long life ensured by the use of state-of-the-art corrosion and erosion resistant materials (saltresistant workmanship),
 - special material execution DUPLEX especially resistant to difficult conditions,
 - possibility to use an electronic system of the balance disk wear monitoring,
 - approved for operation in explosion-hazard zones - ATEX Ex I M2.
-

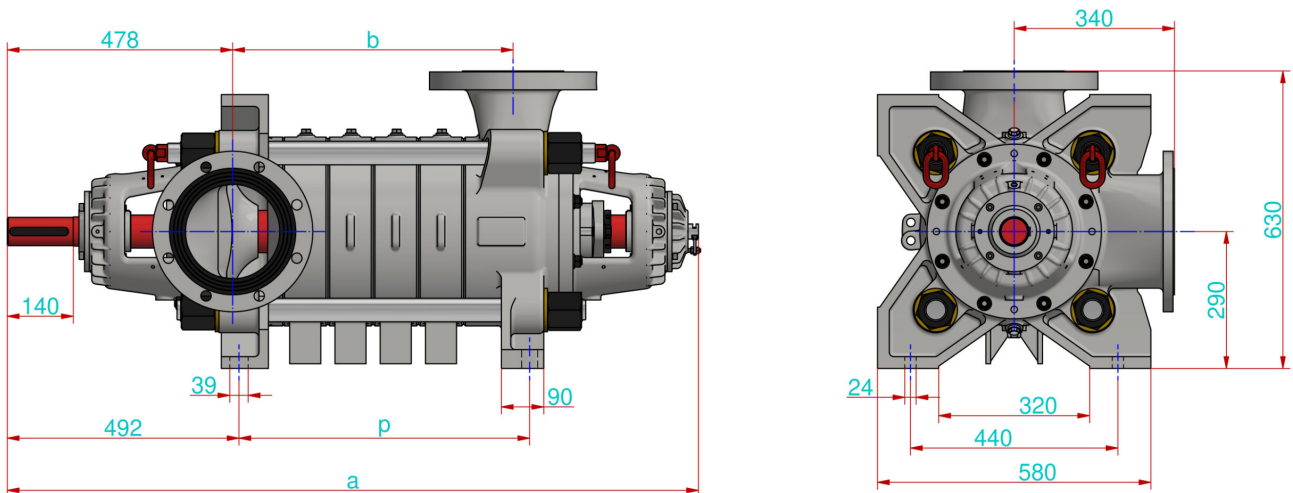
PUMP PERFORMANCE CURVE



■ $H = f(Q)$ - lift head acc. to rate flow,

- $P = f(Q)$ - power input acc. to rate flow,
- $\eta = f(Q)$ - efficiency acc. to rate of flow,
- $H_s = f(Q)$ - allowable suction head acc. to rate of flow,
- $NPSH_3 = f(Q)$ - net positive suction head and rate of flow.

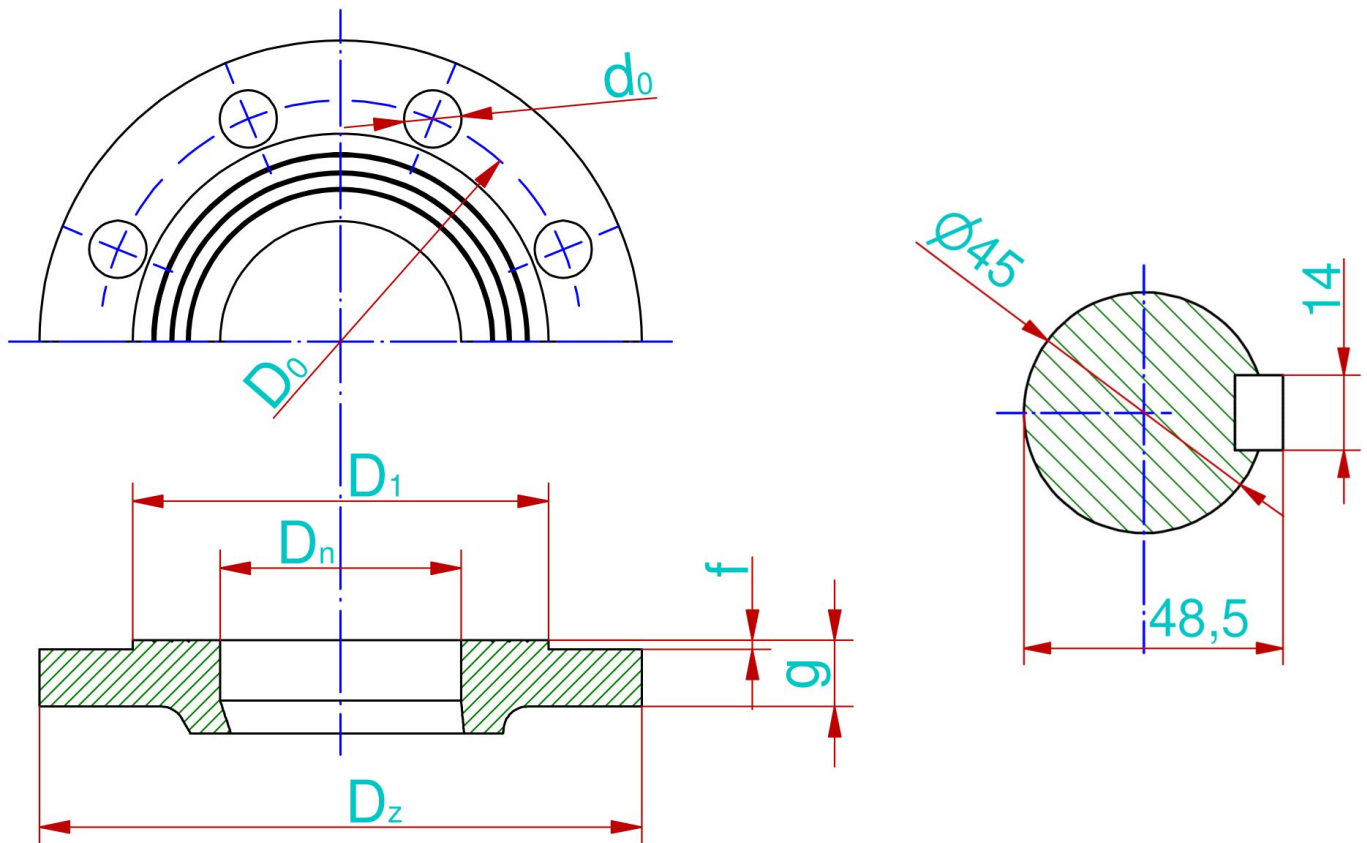
MAIN DIMENSIONS OF PUMP



Liczba stopni

	3	4	5	6	7	8	9	10	11	
a	1198	1288	1378	1468	1558	1648	1738	1828	1198	mm
b	358	448	538	628	718	808	898	988	358	mm
p	350	440	530	620	710	800	890	980	350	mm

CONNECTION SIZES OF PUMP



	D_n	P_n	D_z	d_0	g	f	D_0	D_1	i
Króciec ssawny	150	10	285	22	22	2	240	212	8
Króciec tłoczny PN40 (3-4 stages)	100	40	235	22	26	2	190	162	8
Króciec tłoczny PN63 (5-6 stages)	100	63	250	26	32	2	200	162	8
Króciec tłoczny PN100 (7-10 stages)	100	100	265	30	36	2	210	162	8
	mm	bar	mm	mm	mm	mm	mm	mm	szt

The flanges are normally made in accordance with the standard PN-EN 1092-1.

It is possible to produce pumps with parameters different than those presented in the tables and on the graphs per agreement with the manufacturer.