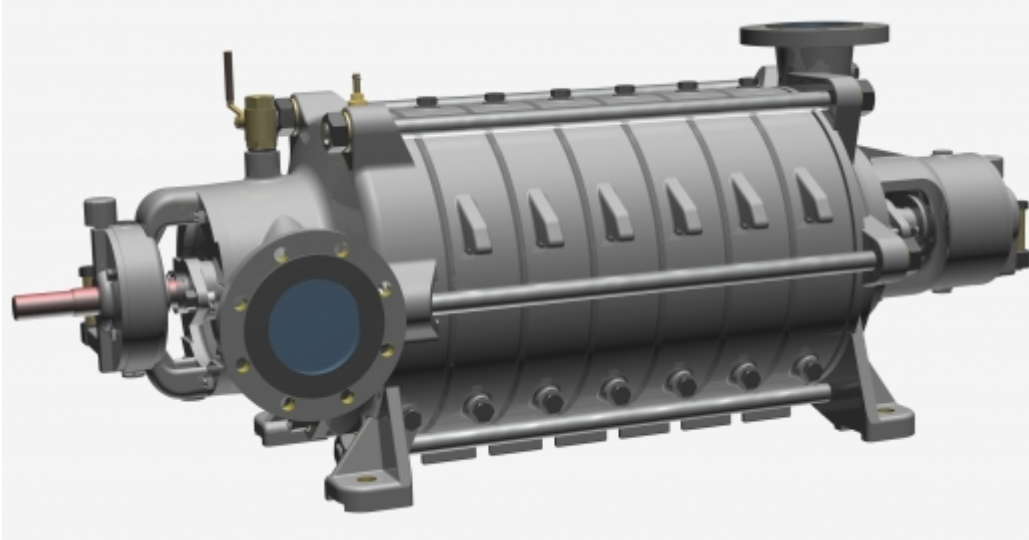


WPS-100M



DOWNLOAD



Catalog



2D



3D

SAVE TO PDF / PRINT

PUBLICATION - 2017-11-07

TYPICAL APPLICATIONS

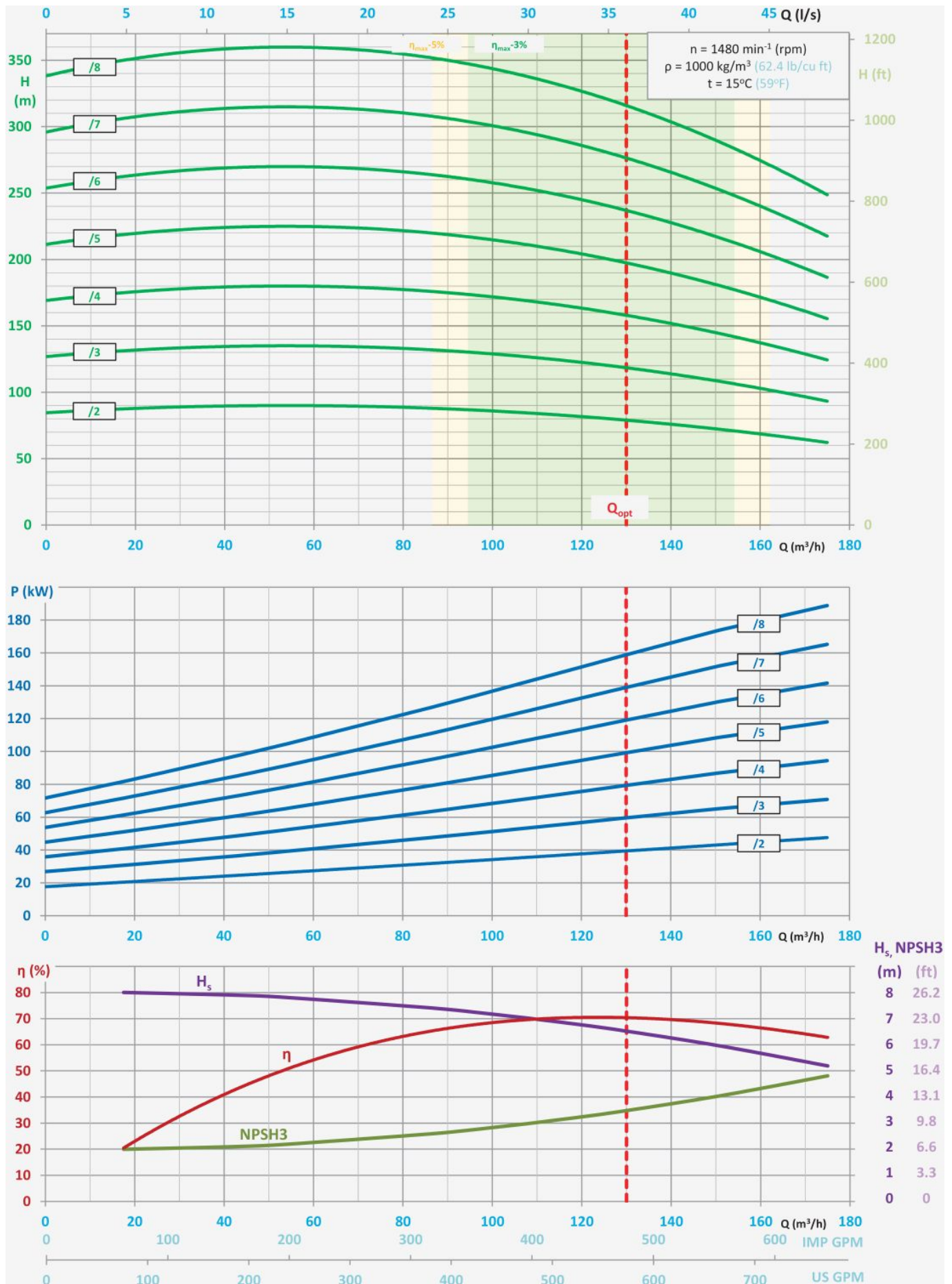
- pumping of pure or mechanically contaminated water with solids with the grain size of up to 2 mm,
- mining - longwall and auxiliary dewatering - WPS pumps intended to replace existing medium pressure drainage pumps,

- water supply systems,
 - pressure boosting,
 - technological processes,
 - industrial systems,
 - filtration systems.
-

KEY ADVANTAGES

- **high efficiency,**
 - long life ensured by the use of state-of-the-art corrosion and erosion resistant materials,
 - special material execution DUPLEX especially resistant to difficult conditions,
 - no water cooling of bearings required due to the appropriate design of the relief of the pump axial forces,
 - silent and smooth operation,
 - connection dimensions in compliance with medium pressure drainage pumps,
 - inflow and suction operation,
 - compact and modern design,
 - maintenance-free operation with the use of mechanical sealing,
 - approved for operation in explosion-hazard zones – ATEX Ex I M2.
-

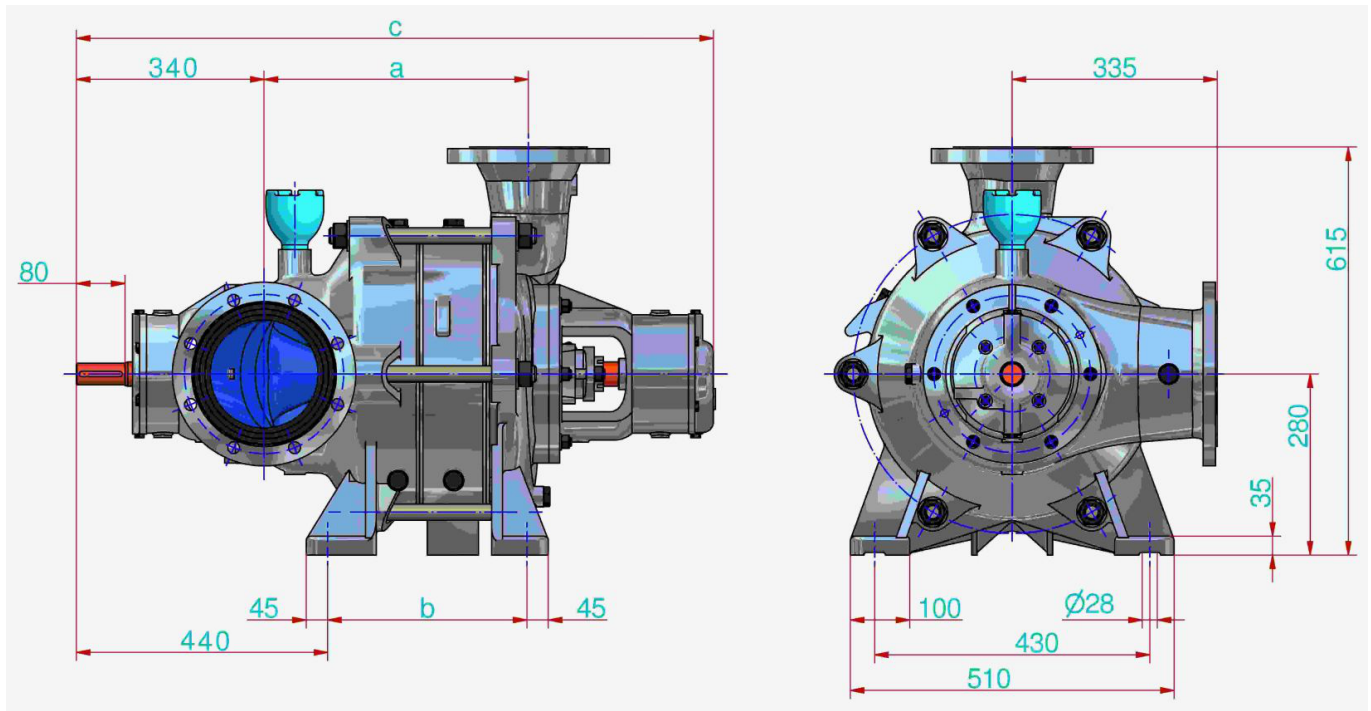
PUMP PERFORMANCE CURVE



- $H = f(Q)$ - lift head acc. to rate flow,

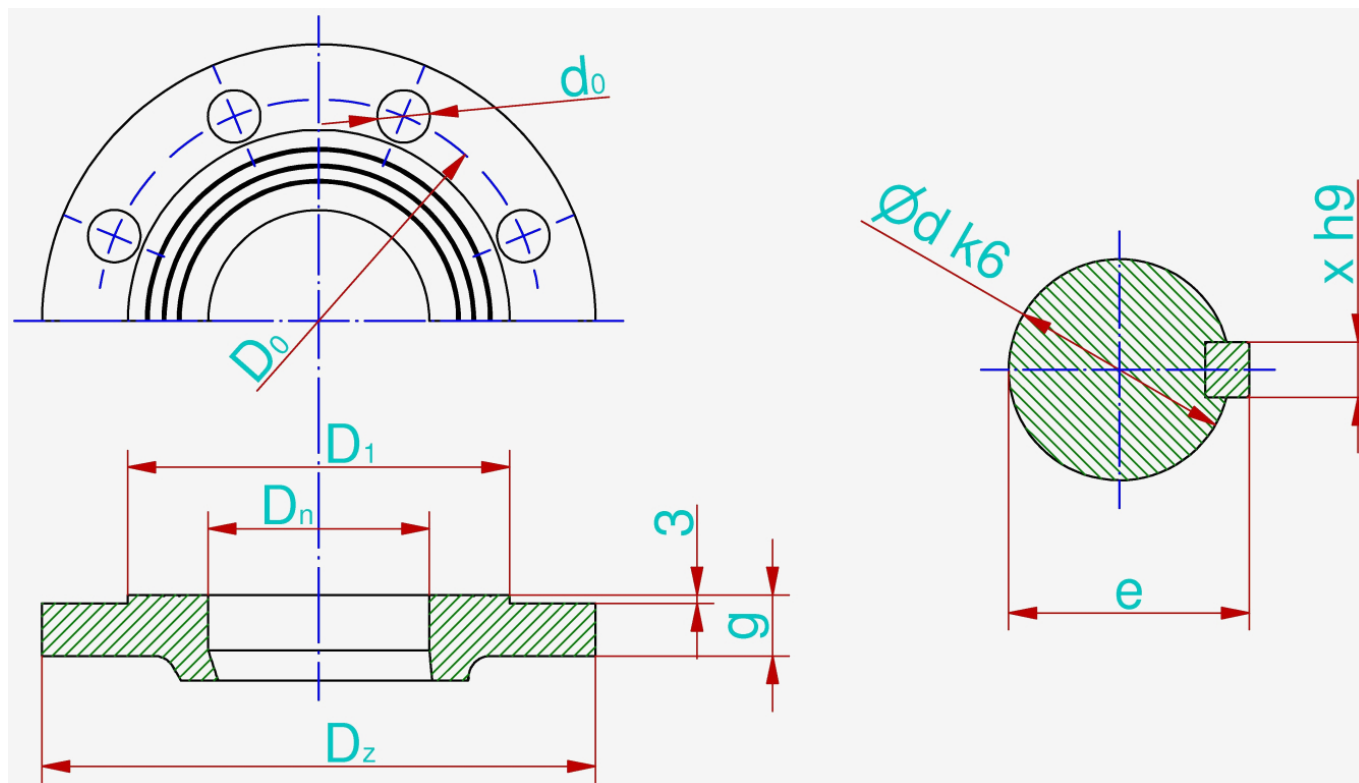
- $P = f(Q)$ - power input acc. to rate flow,
- $\eta = f(Q)$ - efficiency acc. to rate of flow,
- $H_s = f(Q)$ - allowable suction head acc. to rate of flow,
- $NPSH3 = f(Q)$ - net positive suction head and rate of flow.

MAIN DIMENSIONS OF PUMP



Number of stages								
	2	3	4	5	6	7	8	
a	291,5	398,5	505,5	612,5	719,5	826,5	933,5	mm
b	190	297	404	511	618	725	832	mm
c	1000	1107	1214	1321	1428	1535	1642	mm

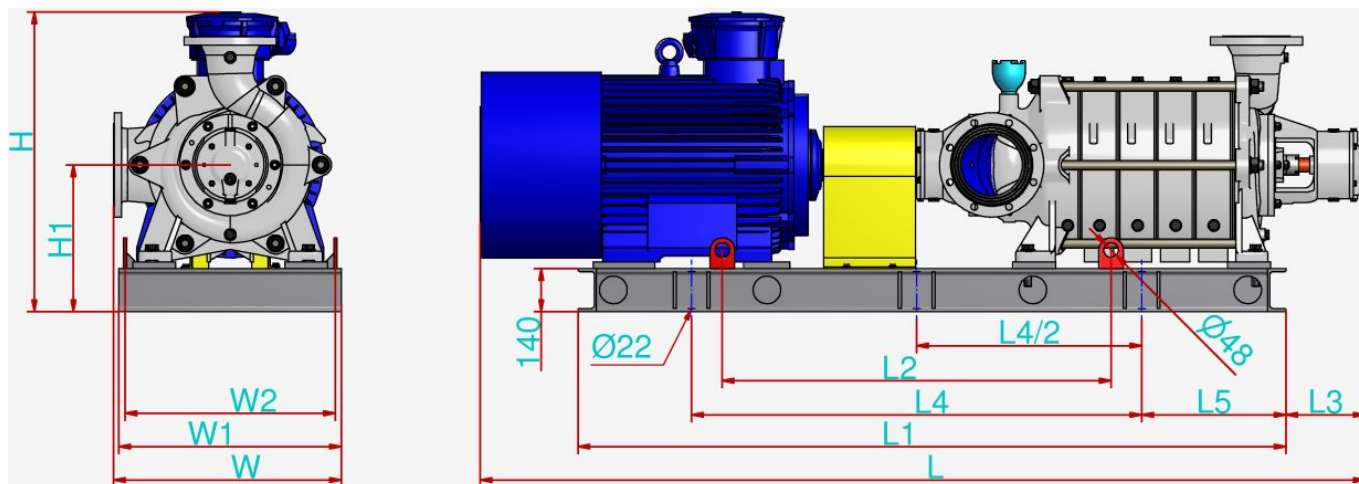
CONNECTION SIZES OF PUMP



	D_n	Number of stages	P_n	D_f	d_0	g	D_0	D_1	i	d	e	x
Suction connector	125	-	10	250	19	24	210	188	8	-	-	-
Discharge connector	100	2÷6	25	235	23	26	190	162	8	-	-	-
		5÷8	40	235	22	24	190	162	8	-	-	-
Shaft / coupling	-	-	-	-	-	-	-	-	-	35	38	10
	mm	-	bar	mm	mm	mm	mm	mm	-	mm	mm	mm

The flanges are normally made in accordance with the standard PN-EN 1092-1 or PN-EN 1092-2.

MAIN DIMENSIONS OF PUMP UNIT



	Number of stages							
	2	3	4	5	6	7	8	
L	1860	2025	2285	2390	2530	2780	2885	mm
L₁	1390	1570	1795	1865	1970	2190	2300	mm
L₂	755	850	975	1010	1060	1205	1255	mm
L₃	255							mm
L₄	950	1045	1170	1205	1260	1400	1450	mm
L₅	195	250	305	355	410	465	515	mm
W	645	645	670	670	670	695	695	mm
W₁	620	620	670	670	670	720	720	mm
W₂	570	570	620	620	620	670	670	mm
H	840	860	910	910	910	955	955	mm
H₁	420	420	420	420	420	455	455	mm
Weight	795	1005	1270	1390	1495	1670	1795	kg
Coupling type (Rex Viva)	V150	V190	V215	V215	V245	V245	V245	-
Motor type (Celma)	dSg 225S4-EP	dSg 250M4-EP	dSg 280S4-EP	dSg 280M4-EP	dSg 280M4z-EP	dSg 315S4-EP	dSg 315M4A-EP	-
Motor power	37	55	75	90	100	110	132	kW
Motor weight	365	485	660	700	725	810	850	kg

It is possible to produce pumps with parameters different than those presented in the tables and on the graphs per agreement with the manufacturer.