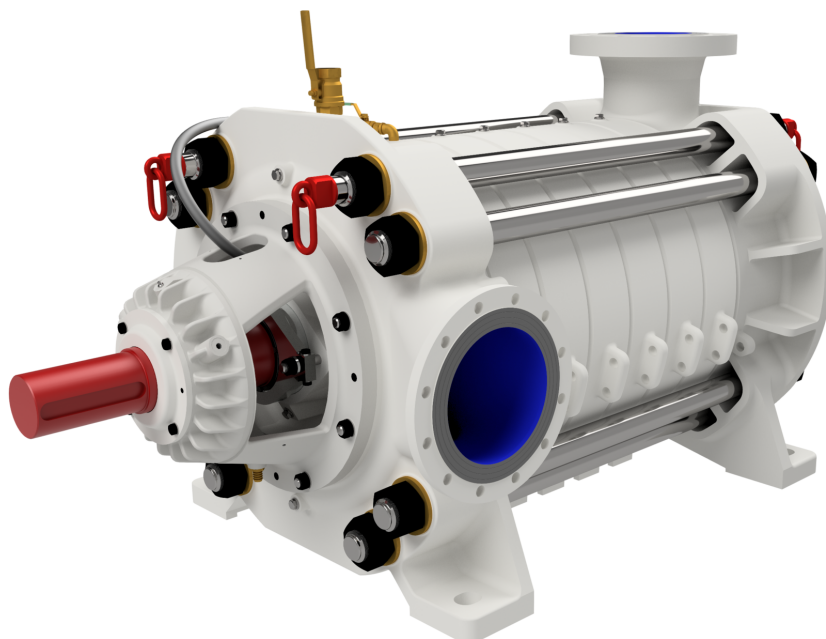


# WE-250

Poprzednia - WPWE-200



## MATERIAŁY DO POBRANIA



Katalog



2D



3D

---

**ZAPISZ DO PDF / DRUKUJ STRONĘ**

---

**DATA PUBLIKACJI - 2017-11-07**

# TYPICAL APPLICATIONS

- mining - main and auxiliary dewatering,
  - industrial systems,
  - technological processes,
  - pressure boosting,
  - pumping of pure or mechanically contaminated water with solids with the grain size of up to 2 mm,
  - coal, copper, salt mines and others.
- 

# KEY ADVANTAGES

- new improved design with increased efficiency
  - long life ensured by the use of state-of-the-art corrosion and erosion resistant materials (saltresistant workmanship),
  - special material execution DUPLEX especially resistant to difficult conditions,
  - possibility to use an electronic system of the balance disk wear monitoring,
  - approved for operation in explosion-hazard zones - ATEX Ex I M2.
- 

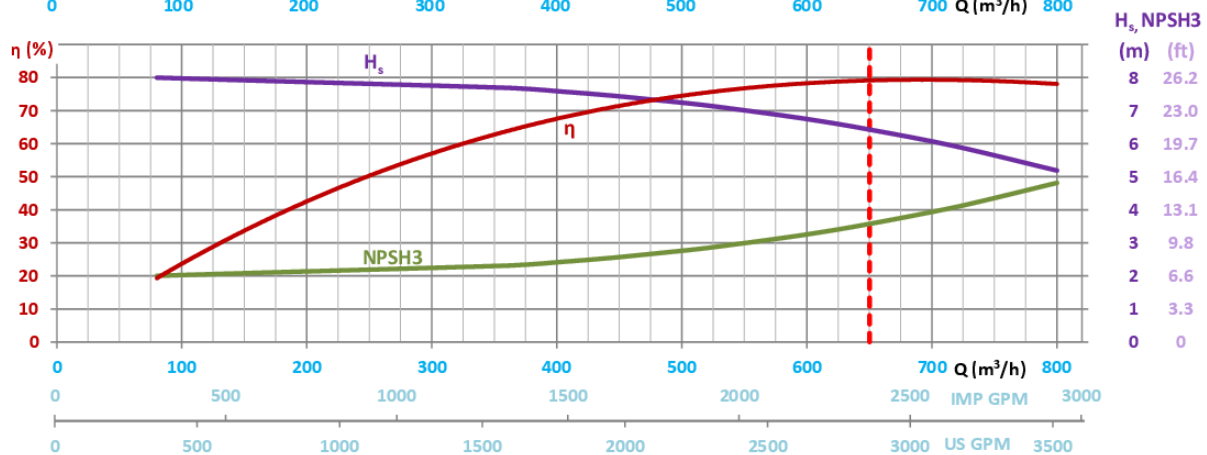
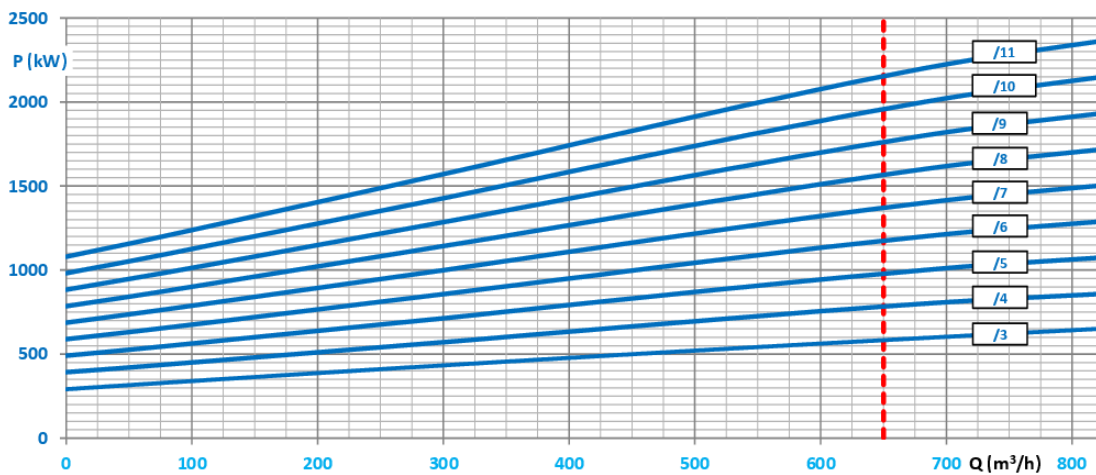
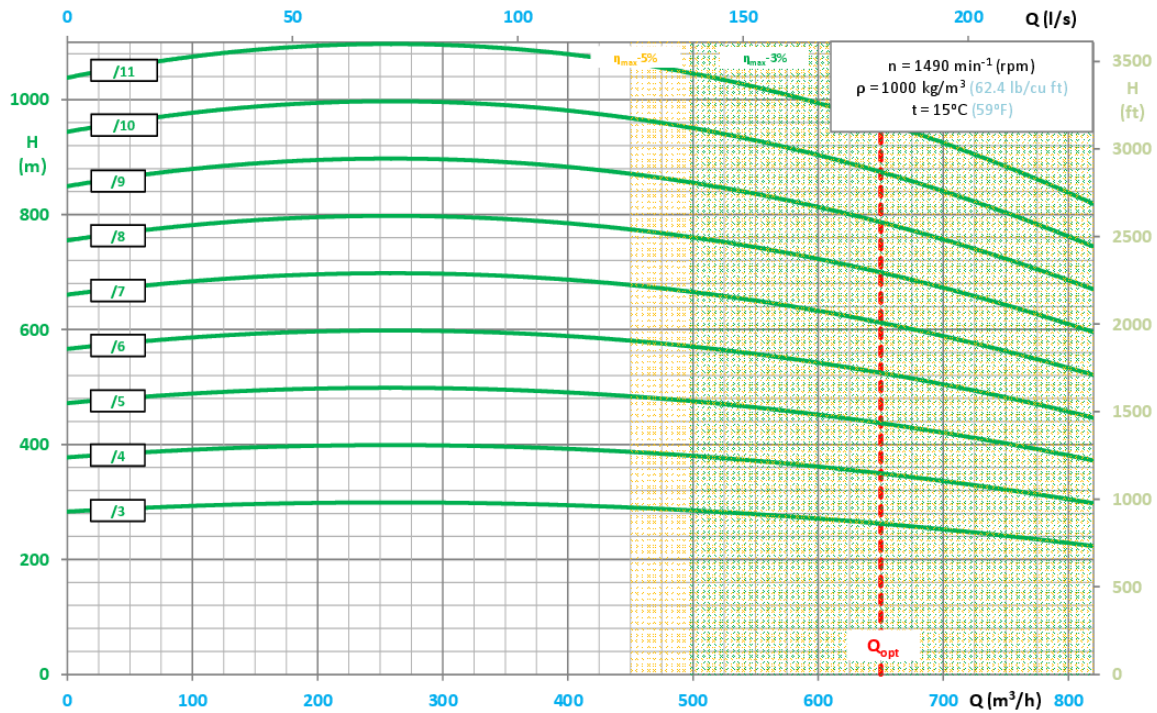
**PUMP**

**PERFORMANCE**

**CURVE**



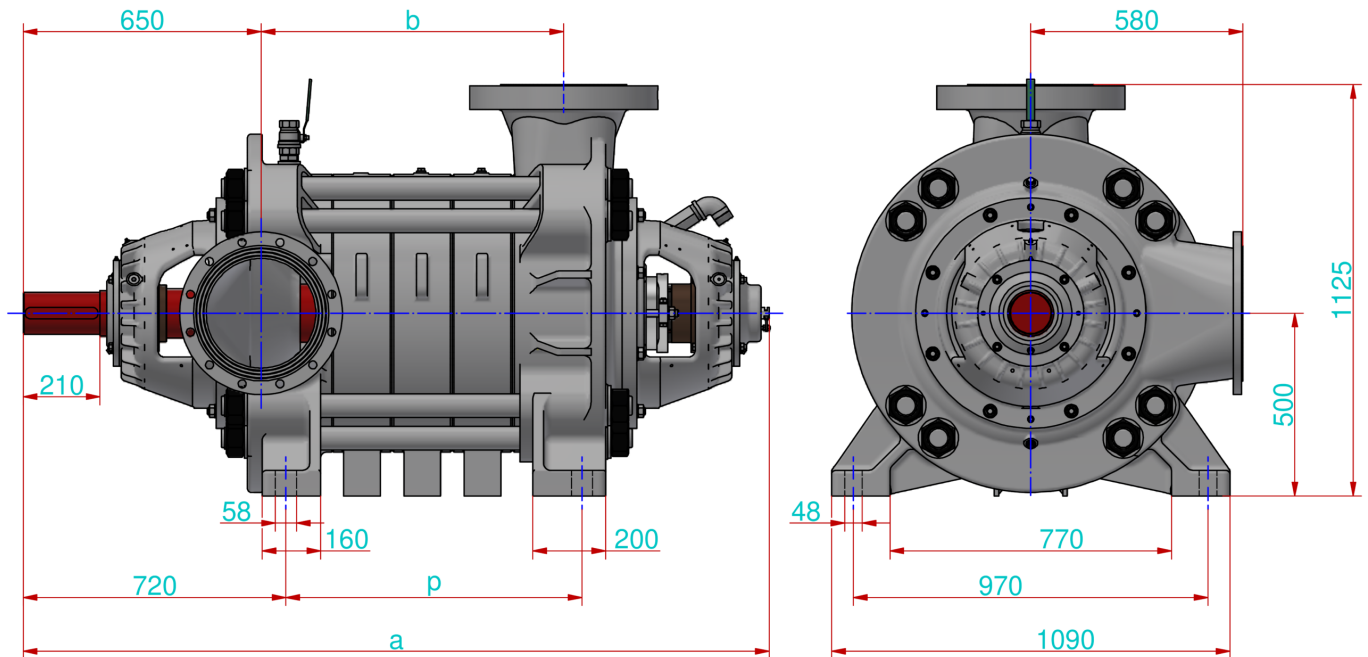




- $H = f(Q)$  - lift head acc. to rate flow,
- $P = f(Q)$  - power input acc. to rate flow,
- $\eta = f(Q)$  - efficiency acc. to rate flow,

- $H_s = f(Q)$  - allowable suction head acc. to rate of flow,
- $NPSH_3 = f(Q)$  - net positive suction head and rate of flow.

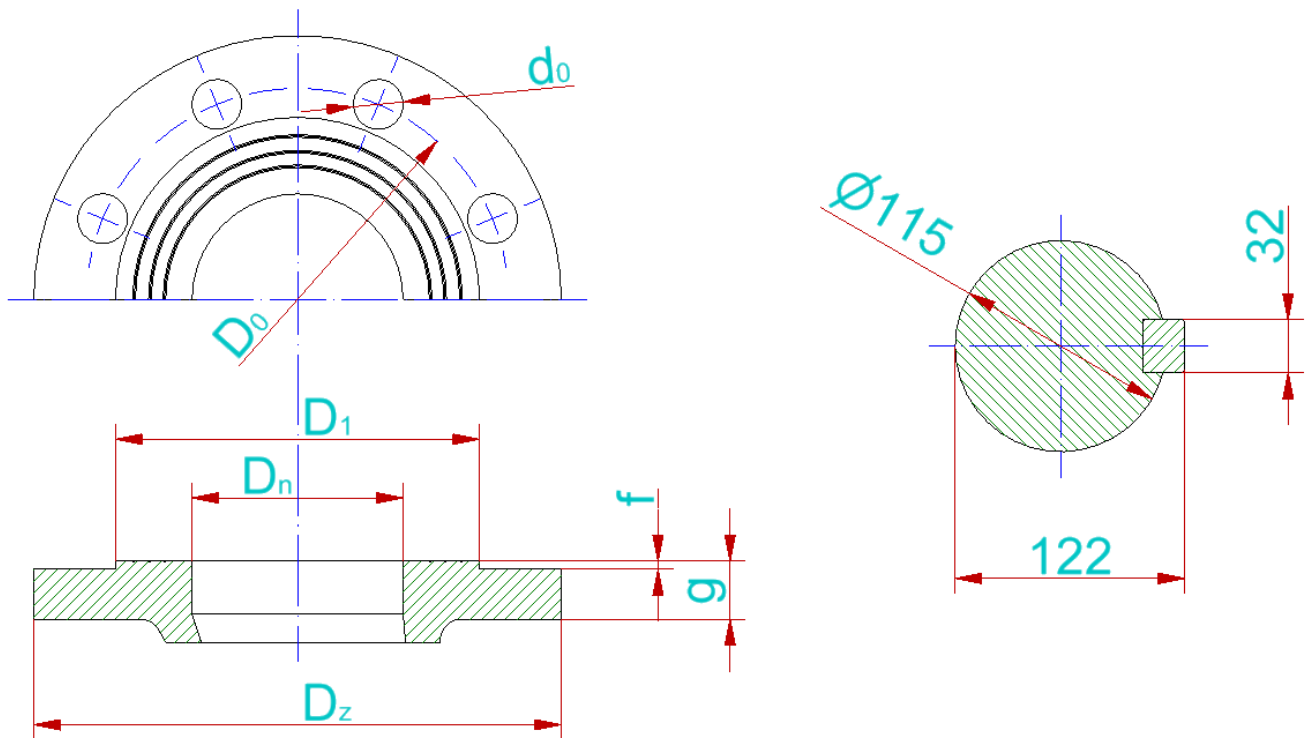
## MAIN DIMENSIONS OF PUMP



	Liczba stopni										
	3	4	5	6	7	8	9	10	11		
<b>a</b>	1885	2050	2215	2380	2545	2710	2890*	3055*	3220*	3385*	mm
<b>b</b>	663	828	993	1158	1323	1488	1653	1818	1983		mm
<b>p</b>	645	810	975	1140	1305	1470	1635	1800	1965		mm
<b>Masa</b>	2800	3130	3465	3800	4130	4480	4815	5150	5480		kg

\* - wykonanie z napędem dwustronnym

## CONNECTION SIZES OF PUMP



	$D_n$	$P_n$	$D_z$	$d_0$	$g$	$f$	$D_0$	$D_1$	$i$
Króciec ssawny	300	10	445	22	26	3	400	370	12
Króciec tłoczny PN63 (3-5 stopni)	250	63	470	36	46	3	400	345	12
Króciec tłoczny PN100 (6-8 stopni)	250	100	505	39	60	3	430	345	12
Króciec tłoczny PN160 (9-11 stopni)	250	160	515	42	68	3	430	345	12
	mm	bar	mm	mm	mm	mm	mm	mm	szt.

The flanges are normally made in accordance with the standard PN-EN 1092-1.

**It is possible to produce pumps with parameters different than those presented in the tables and on the graphs per agreement with the manufacturer.**