

PS-250Z



DOWNLOAD



Catalog



2D



3D

SAVE TO PDF / PRINT

PUBLICATION - 2017-11-07

TYPICAL APPLICATIONS

- pumping of pure or mechanically contaminated water with solids with the grain size of up to 2 mm,
 - mining - longwall and auxiliary dewatering,
 - water supply systems,
 - pressure boosting,
 - technological processes,
 - industrial systems,
 - filtration systems.
-

KEY ADVANTAGES

- long life ensured by the use of state-of-the-art corrosion and erosion resistant materials,
 - special material execution DUPLEX especially resistant to difficult conditions,
 - no water cooling of bearings required due to the appropriate design of the relief of the pump axial forces,
 - silent and smooth operation,
 - connection dimensions in compliance with medium pressure drainage pumps,
 - inflow and suction operation,
 - compact and modern design,
 - maintenance-free operation with the use of mechanical sealing,
 - approved for operation in explosion-hazard zones - ATEX Ex I M2.
-

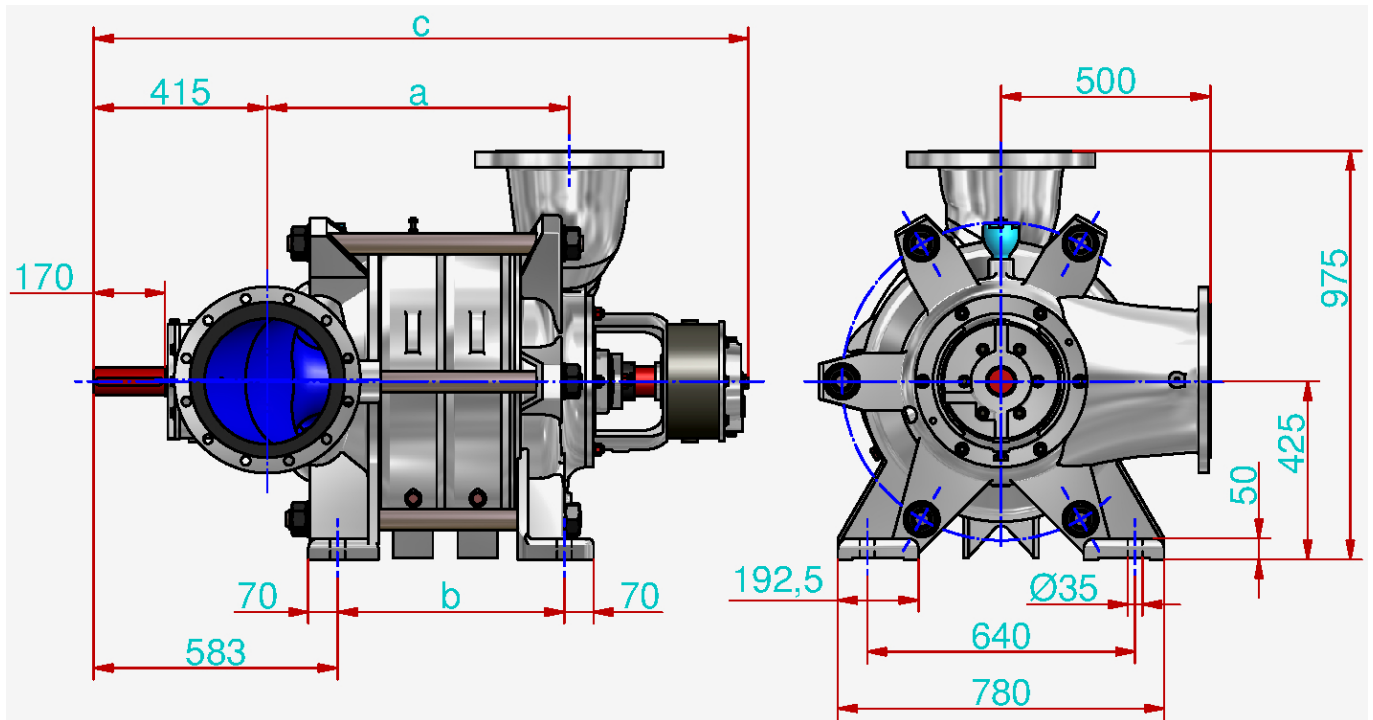
PUMP PERFORMANCE CURVE



- $H = f(Q)$ - lift head acc. to rate flow,

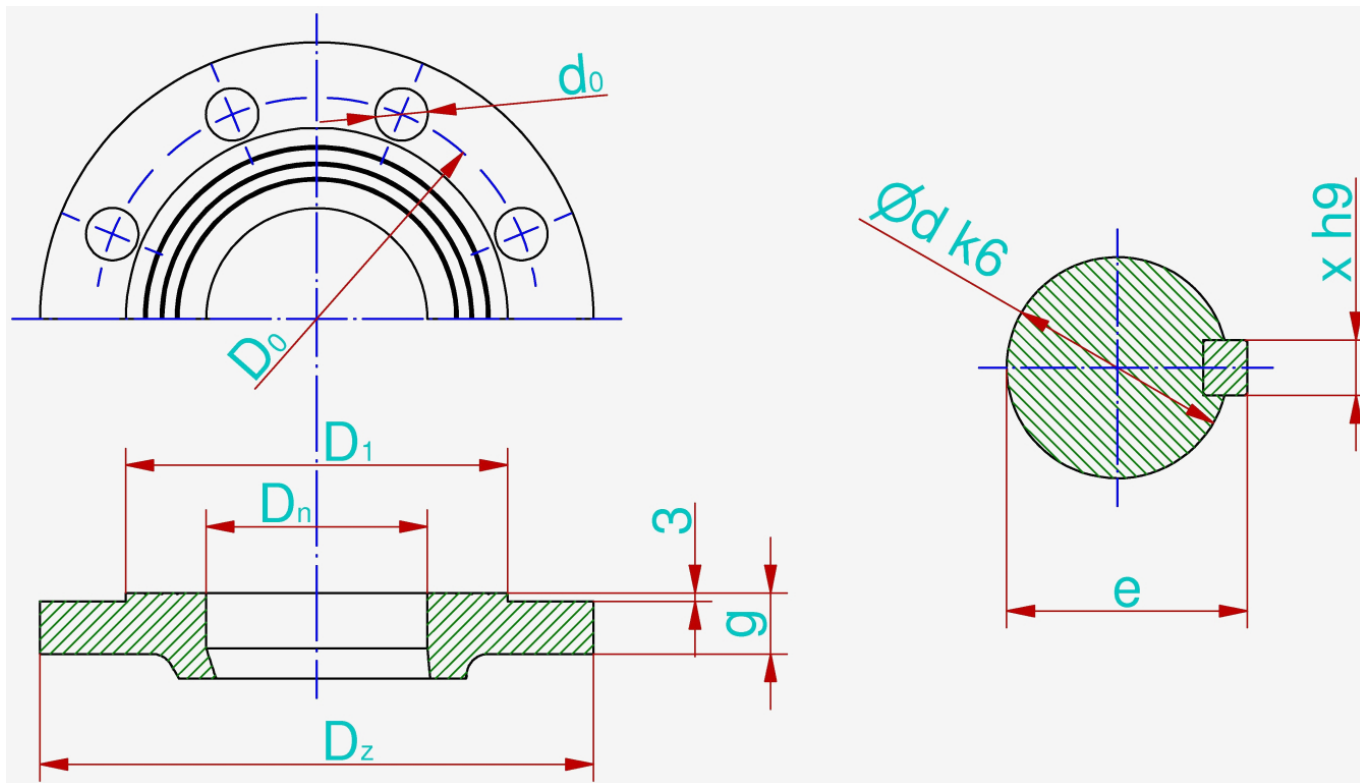
- $P = f(Q)$ - power input acc. to rate of flow,
- $\eta = f(Q)$ - efficiency acc. to rate of flow,
- $H_s = f(Q)$ - allowable suction head acc. to rate of flow,
- $NPSH_3 = f(Q)$ - net positive suction head and rate of flow.

MAIN DIMENSIONS OF PUMP



	Number of stages				
	2	3	4	5	
a	528	682	836	990	mm
b	388	542	696	850	mm
c	1414	1568	1722	1876	mm

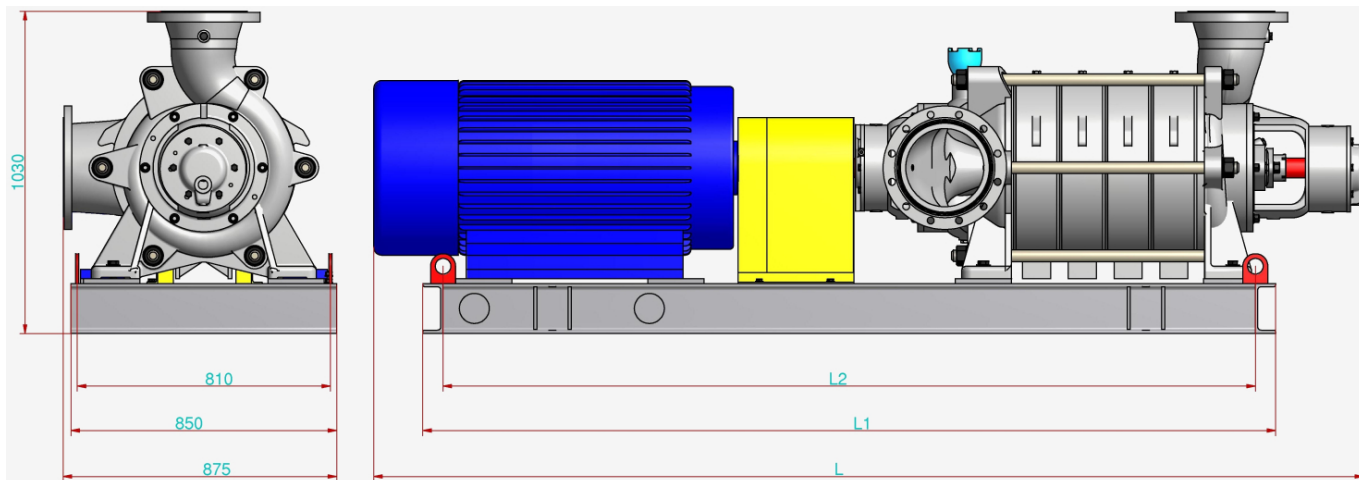
CONNECTION SIZES OF PUMP



	P_n	D_n	i	D_z	d_0	g	D_0	D_1	d	e	x
Suction connector	10	300	12	445	22	28	400	370	-	-	-
Discharge connector	40	250	12	450	33	38	385	345	-	-	-
Shaft / coupling	-	-	-	-	-	-	-	-	65	69	18
	bar	mm	-	mm	mm	mm	mm	mm	mm	mm	mm

The flanges are normally made in accordance with the standard PN-EN 1092-1 or PN-EN 1092-2.

MAIN DIMENSIONS OF PUMP UNIT



	Number of stages				
	2	3	4	5	
L	In progress	In progress	In progress	In progress	mm
L₁	In progress	In progress	In progress	In progress	mm
L₂	In progress	In progress	In progress	In progress	mm
Weight	In progress	In progress	In progress	In progress	kg
Coupling type (Rex Viva)	V290	V365	V365	W opracowaniu	-
Motor type (Celma)	dSg 315L4-EP	STLG 335 M4	Damel 2SG2 400M-4f	Emit dSKgw 500 Y4	-
Motor power	200	250	355	500	kW

It is possible to produce pumps with parameters different than those presented in the tables and on the graphs per agreement with the manufacturer.