

PS-200Z



DOWNLOAD



Catalog



2D



3D

SAVE TO PDF / PRINT

PUBLICATION - 2017-11-07

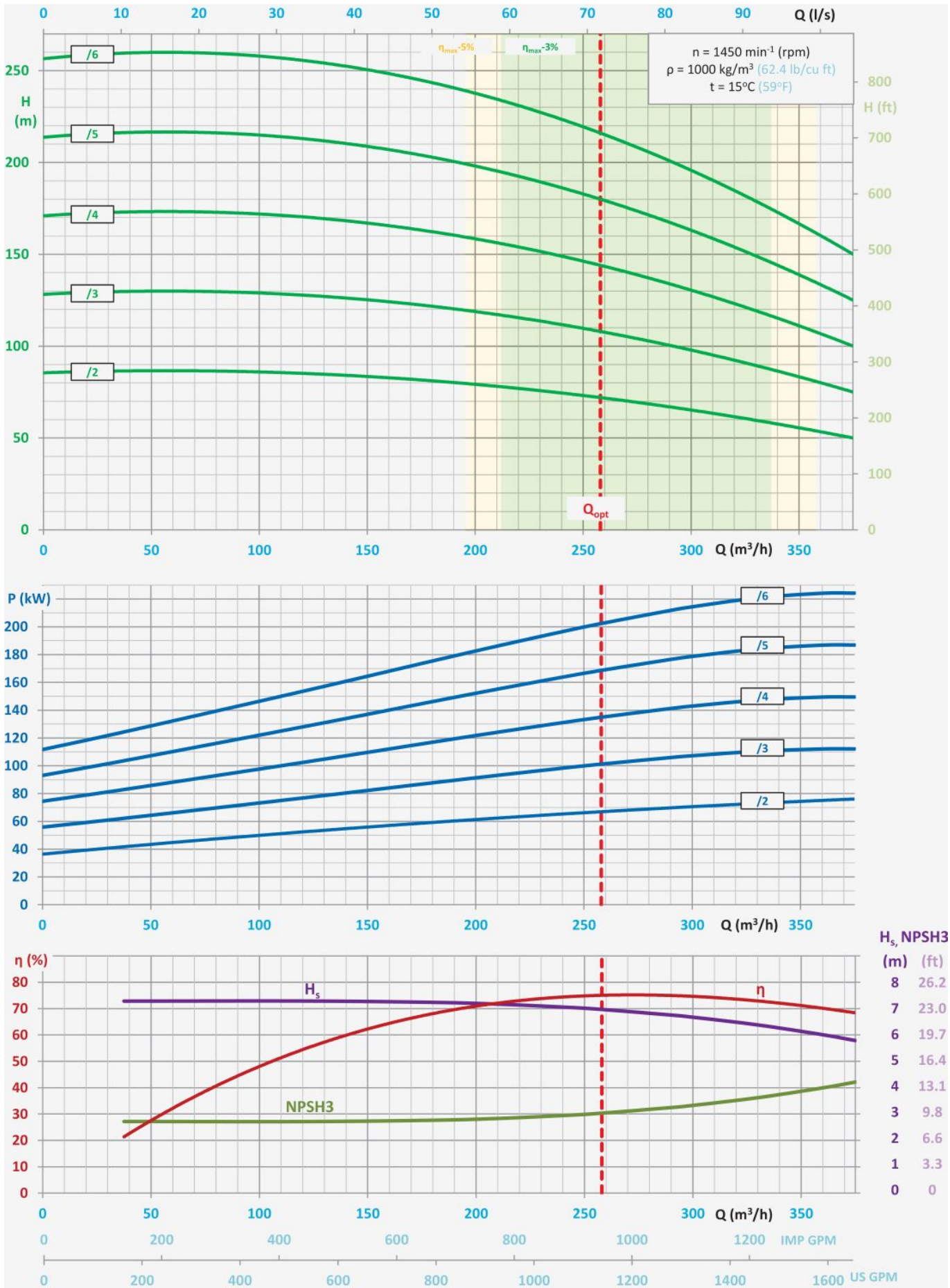
TYPICAL APPLICATIONS

- pumping of pure or mechanically contaminated water with solids with the grain size of up to 2 mm,
 - mining - longwall and auxiliary dewatering,
 - water supply systems,
 - pressure boosting,
 - technological processes,
 - industrial systems,
 - filtration systems.
-

KEY ADVANTAGES

- long life ensured by the use of state-of-the-art corrosion and erosion resistant materials,
 - special material execution DUPLEX especially resistant to difficult conditions,
 - no water cooling of bearings required due to the appropriate design of the relief of the pump axial forces,
 - silent and smooth operation,
 - connection dimensions in compliance with medium pressure drainage pumps,
 - inflow and suction operation,
 - compact and modern design,
 - maintenance-free operation with the use of mechanical sealing,
 - approved for operation in explosion-hazard zones - ATEX Ex I M2.
-

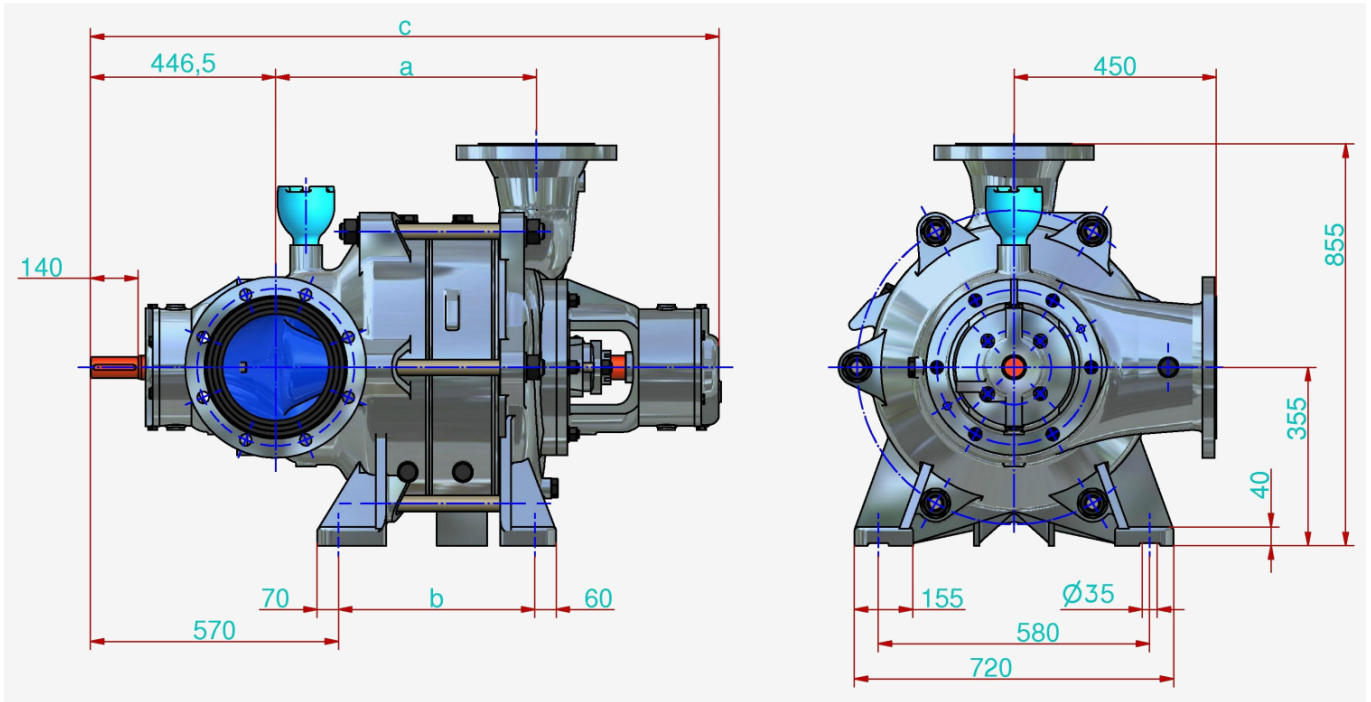
PUMP PERFORMANCE CURVE



- $H = f(Q)$ - lift head acc. to rate flow,

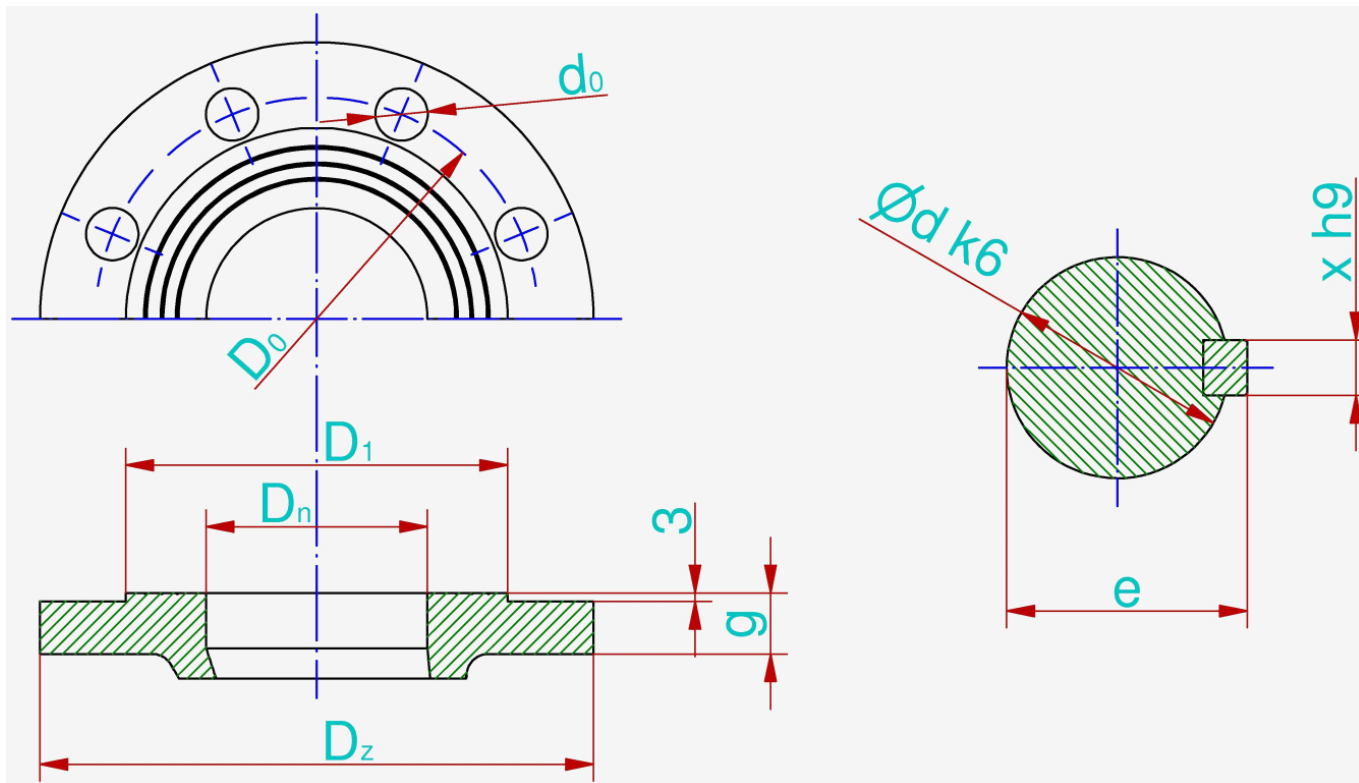
- $P = f(Q)$ - power input acc. to rate flow,
- $\eta = f(Q)$ - efficiency acc. to rate of flow,
- $H_s = f(Q)$ - allowable suction head acc. to rate of flow,
- $NPSH_3 = f(Q)$ - net positive suction head and rate of flow.

MAIN DIMENSIONS OF PUMP



	Number of stages						
	2	3	4	5	6		
a	479	626	773	920	1067	mm	
b	359	506	653	800	947	mm	
c	1367	1514	1661	1808	1955	mm	

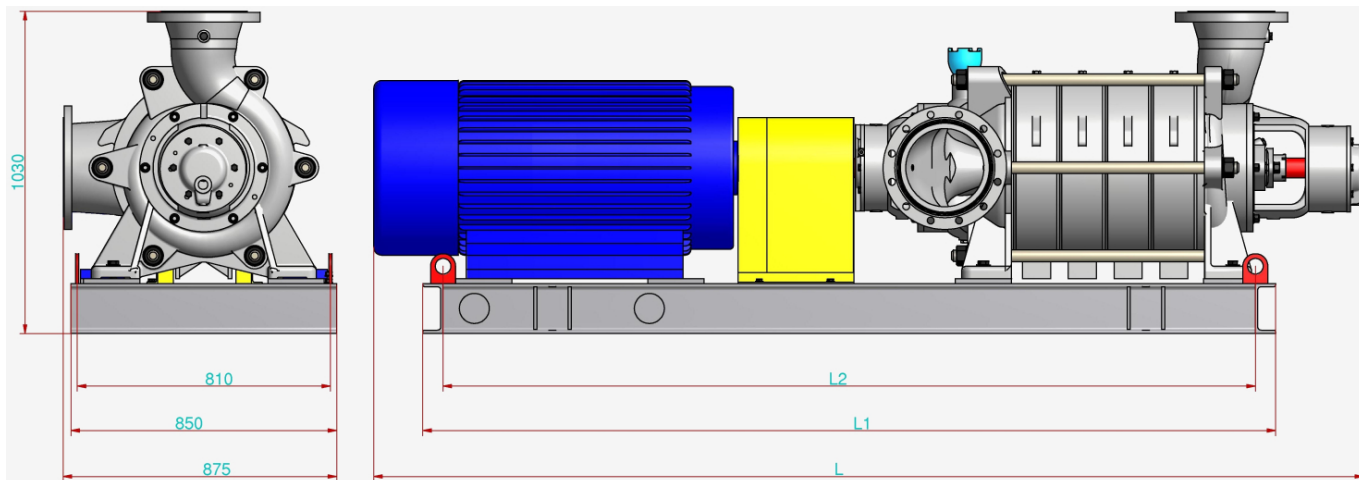
CONNECTION SIZES OF PUMP



	P_n	D_n	i	D_z	d_0	g	D_0	D_1	d	e	x
Suction connector	10	250	12	395	22	28	350	320	-	-	-
Discharge connector	25	200	12	360	26	34	310	278	-	-	-
Shaft / coupling	-	-	-	-	-	-	-	-	60	64	18
	bar	mm	-	mm	mm	mm	mm	mm	mm	mm	mm

The flanges are normally made in accordance with the standard PN-EN 1092-1 or PN-EN 1092-2.

MAIN DIMENSIONS OF PUMP UNIT



	Number of stages					
	2	3	4	5	6	
L	2479	2797	2944	3172	3639	mm
L₁	1909	2164	2311	2459	2954	mm
L₂	1779	2034	2181	2329	2824	mm
Weight	1675	2014	2160	2368	3609	kg
Coupling type (Rex Viva)	V215	V245	V245	V290	V365	-
Motor type (Celma)	dSg 280S4-EP	dSg 315M4A-EP	dSg 315M4B-EP	dSg 315L4-EP	STLG 355M4	-

It is possible to produce pumps with parameters different than those presented in the tables and on the graphs per agreement with the manufacturer.