

# PS-150Z



## DOWNLOAD



Catalog



2D



3D

---

## SAVE TO PDF / PRINT

---

**PUBLICATION - 2017-11-07**

## TYPICAL APPLICATIONS

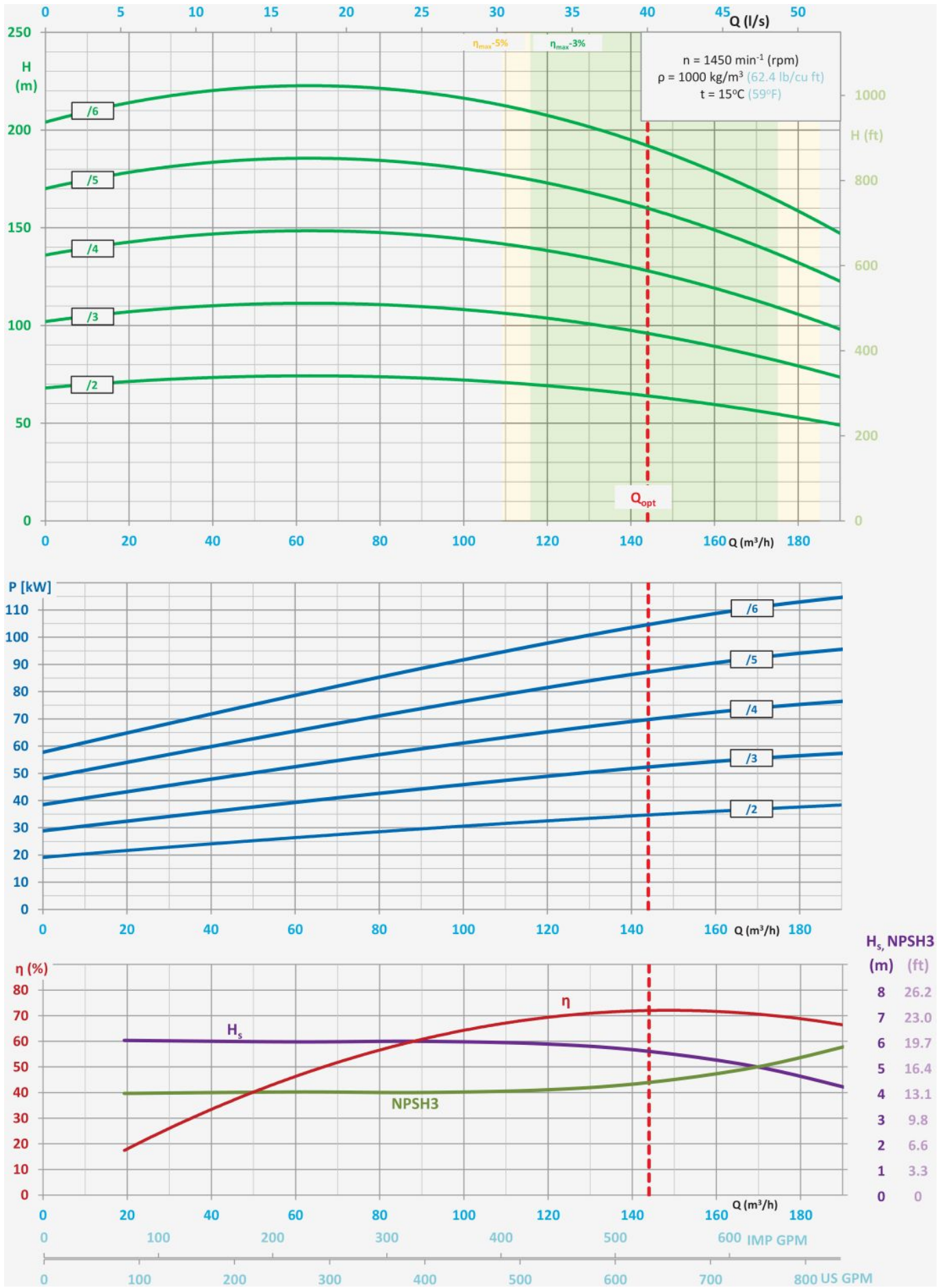
- pumping of pure or mechanically contaminated water with solids with the grain size of up to 2 mm,
- mining - longwall and auxiliary dewatering,

- water supply systems,
  - pressure boosting,
  - technological processes,
  - industrial systems,
  - filtration systems.
- 

## **KEY ADVANTAGES**

- long life ensured by the use of state-of-the-art corrosion and erosion resistant materials,
  - special material execution DUPLEX especially resistant to difficult conditions,
  - no water cooling of bearings required due to the appropriate design of the relief of the pump axial forces,
  - silent and smooth operation,
  - connection dimensions in compliance with medium pressure drainage pumps,
  - inflow and suction operation,
  - compact and modern design,
  - maintenance-free operation with the use of mechanical sealing,
  - approved for operation in explosion-hazard zones - ATEX Ex I M2.
- 

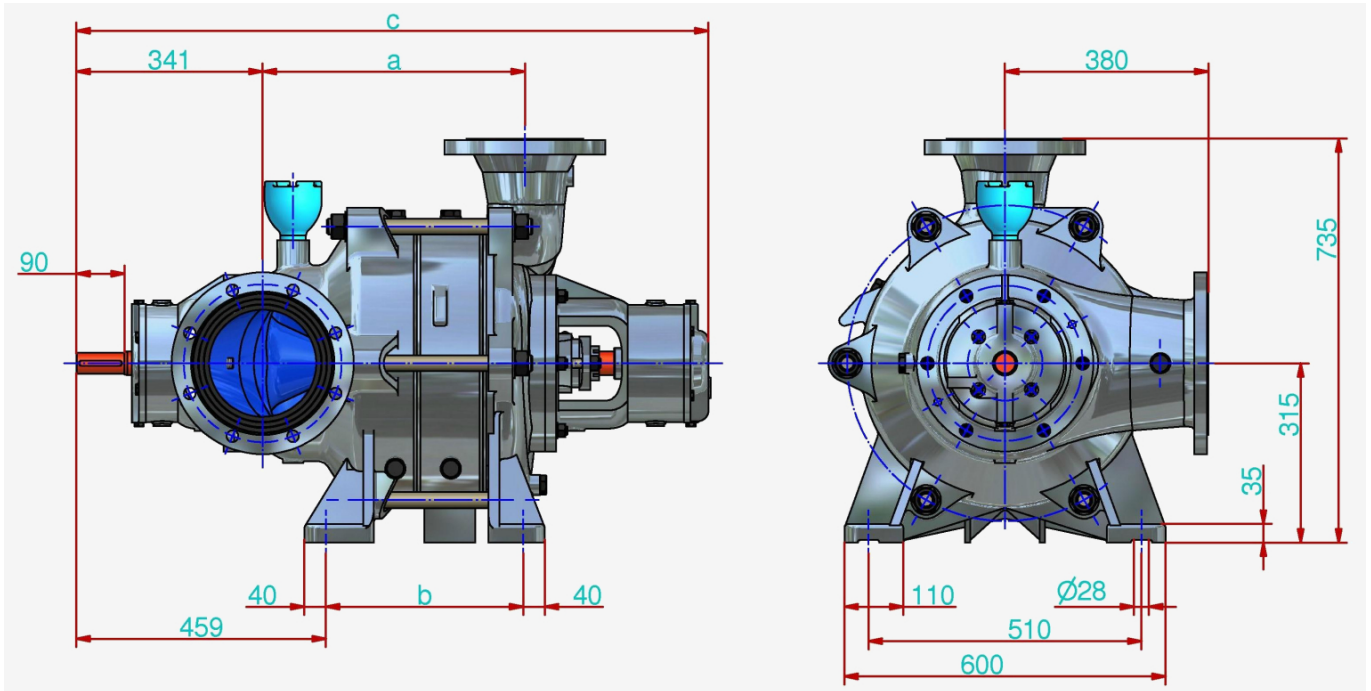
## **PUMP PERFORMANCE CURVE**



- $H = f(Q)$  - lift head acc. to rate flow,

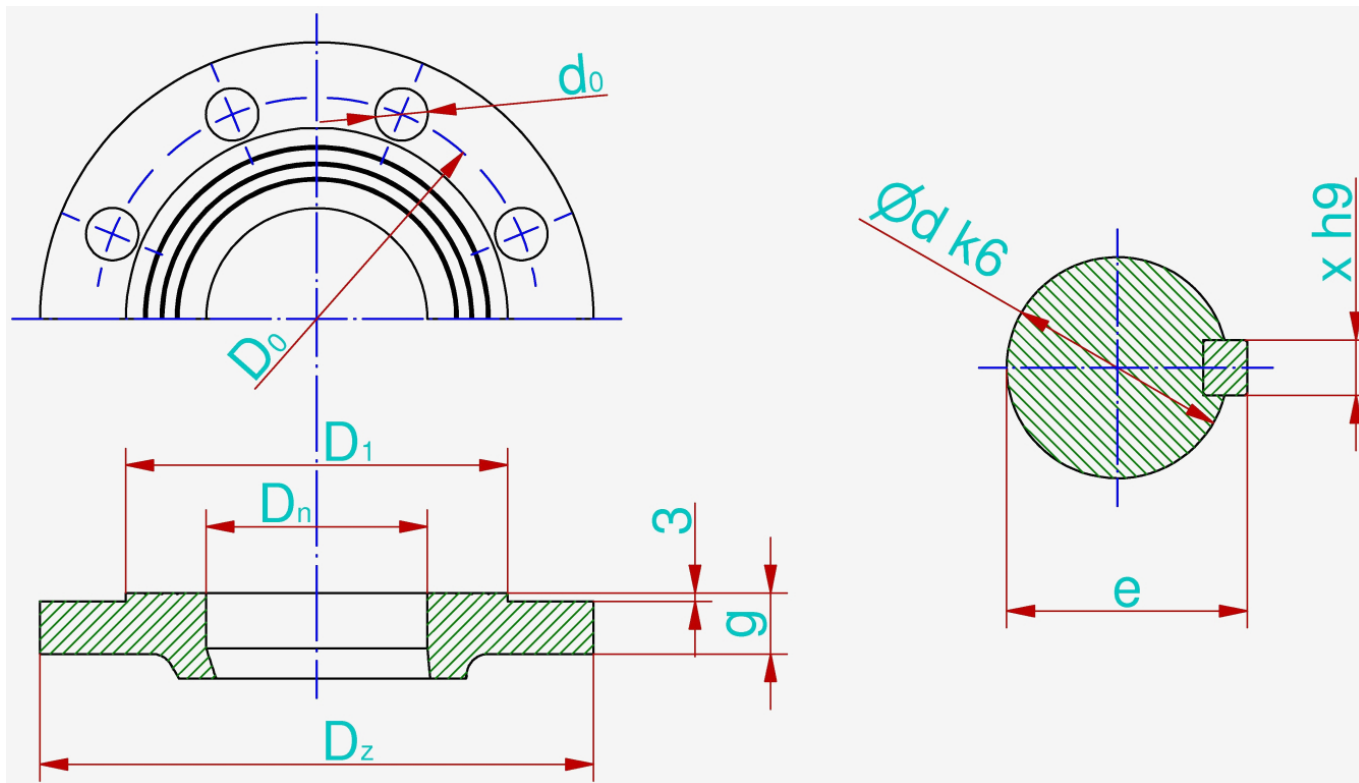
- $P = f(Q)$  - power input acc. to rate flow,
- $\eta = f(Q)$  - efficiency acc. to rate of flow,
- $H_s = f(Q)$  - allowable suction head acc. to rate of flow,
- $NPSH_3 = f(Q)$  - net positive suction head and rate of flow.

## MAIN DIMENSIONS OF PUMP



	Number of stages					
	2	3	4	5	6	
<b>a</b>	367	491	615	739	863	mm
<b>b</b>	246	370	494	618	742	mm
<b>c</b>	1101	1125	1349	1473	1597	mm

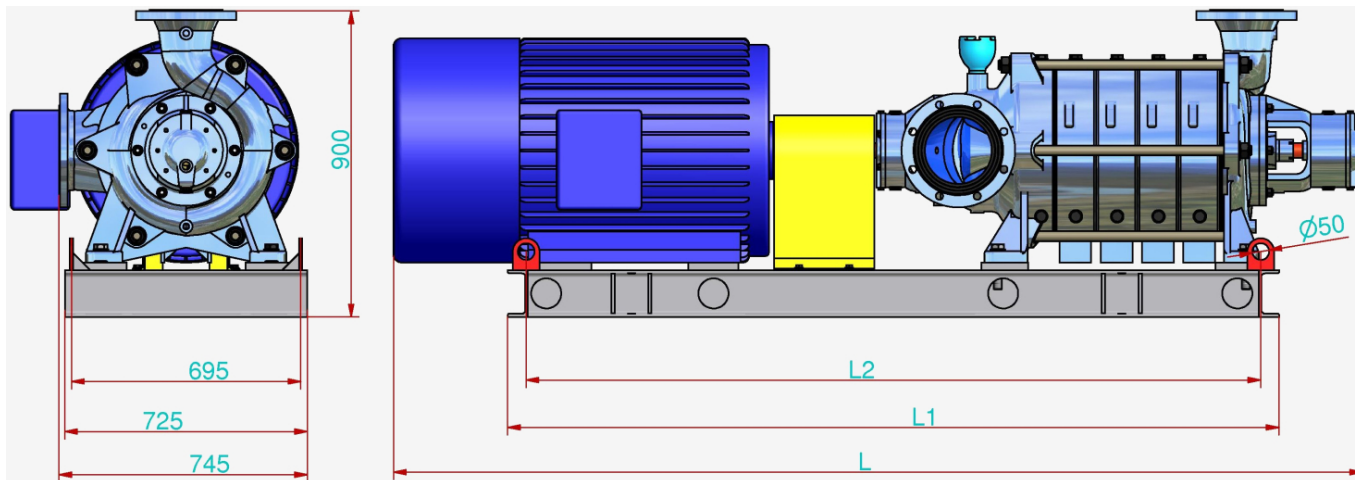
## CONNECTION SIZES OF PUMP



	$P_n$	$D_n$	$i$	$D_z$	$d_0$	$g$	$D_0$	$D_1$	$d$	$e$	$x$
<b>Suction connector</b>	10	200	8	340	22	26	295	268	-	-	-
<b>Discharge connector</b>	25	150	8	300	26	30	250	210	-	-	-
<b>Shaft / coupling</b>	-	-	-	-	-	-	-	-	40	43,5	10
	bar	mm	-	mm	mm	mm	mm	mm	mm	mm	mm

The flanges are normally made in accordance with the standard PN-EN 1092-1 or PN-EN 1092-2.

## MAIN DIMENSIONS OF PUMP UNIT



	Number of stages					
	2	3	4	5	6	
<b>L</b>	2013	2351	2475	2776	2894	mm
<b>L<sub>1</sub></b>	1517	1779	1903	2135	2259	mm
<b>L<sub>2</sub></b>	1397	1659	1783	2015	2139	mm
<b>Weight</b>	1069	1444	1604	1830	1979	kg
<b>Coupling type (Rex Viva)</b>	V170	V215	V215	V245	V245	-
<b>Motor type (Celma)</b>	dSg 225M4-EP	dSg 280S4-EP	dSg 280S4-EP	dSg 280M4Z-EP	dSg 315M4A-EP	-

**It is possible to produce pumps with parameters different than those presented in the tables and on the graphs per agreement with the manufacturer.**