

PS-100Z



DOWNLOAD



Catalog



2D



3D

SAVE TO PDF / PRINT

PUBLICATION - 2017-11-07

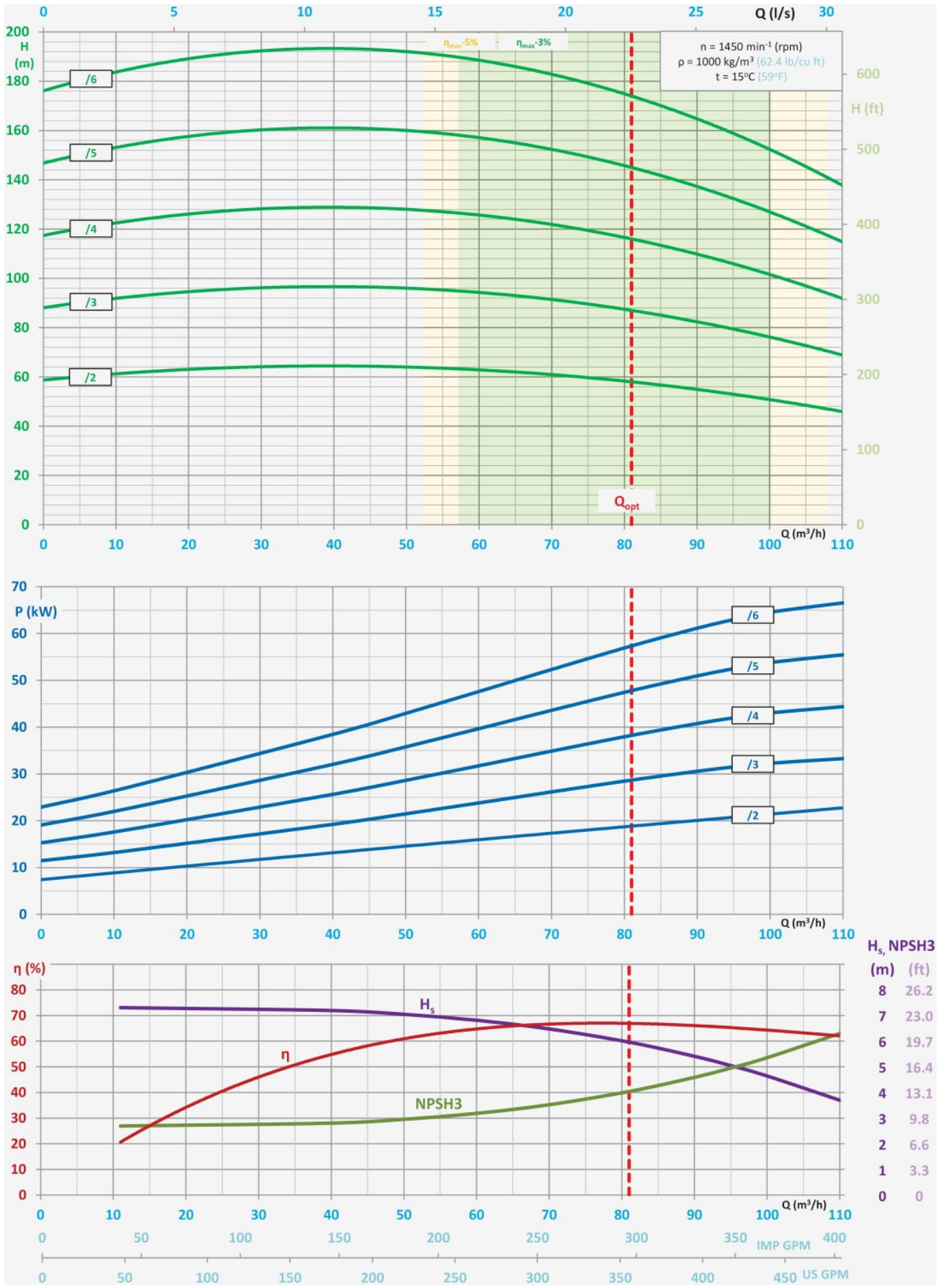
TYPICAL APPLICATIONS

- pumping of pure or mechanically contaminated water with solids with the grain size of up to 2 mm,
 - mining - longwall and auxiliary dewatering,
 - water supply systems,
 - pressure boosting,
 - technological processes,
 - industrial systems,
 - filtration systems.
-

KEY ADVANTAGES

- long life ensured by the use of state-of-the-art corrosion and erosion resistant materials,
 - special material execution DUPLEX especially resistant to difficult conditions,
 - no water cooling of bearings required due to the appropriate design of the relief of the pump axial forces,
 - silent and smooth operation,
 - connection dimensions in compliance with medium pressure drainage pumps,
 - inflow and suction operation,
 - compact and modern design,
 - maintenance-free operation with the use of mechanical sealing,
 - approved for operation in explosion-hazard zones - ATEX Ex I M2.
-

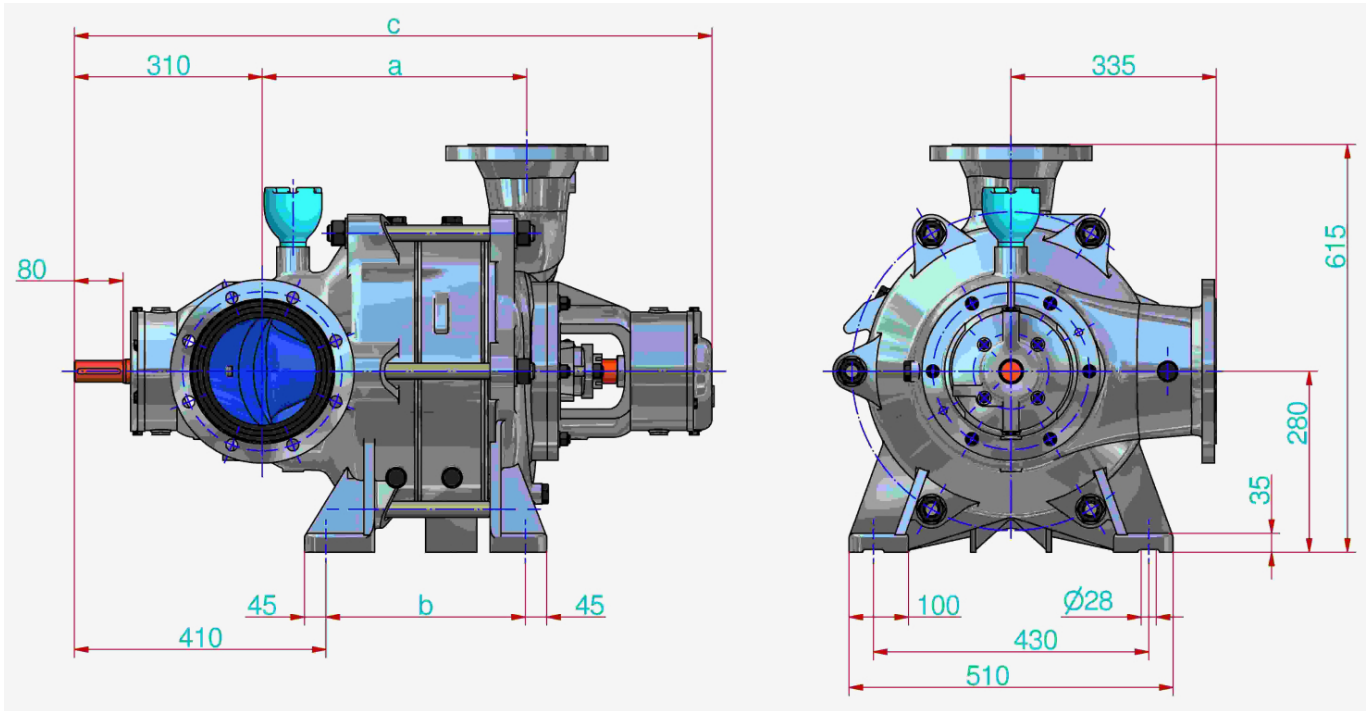
PUMP PERFORMANCE CURVE



- $H = f(Q)$ - lift head acc. to rate flow,

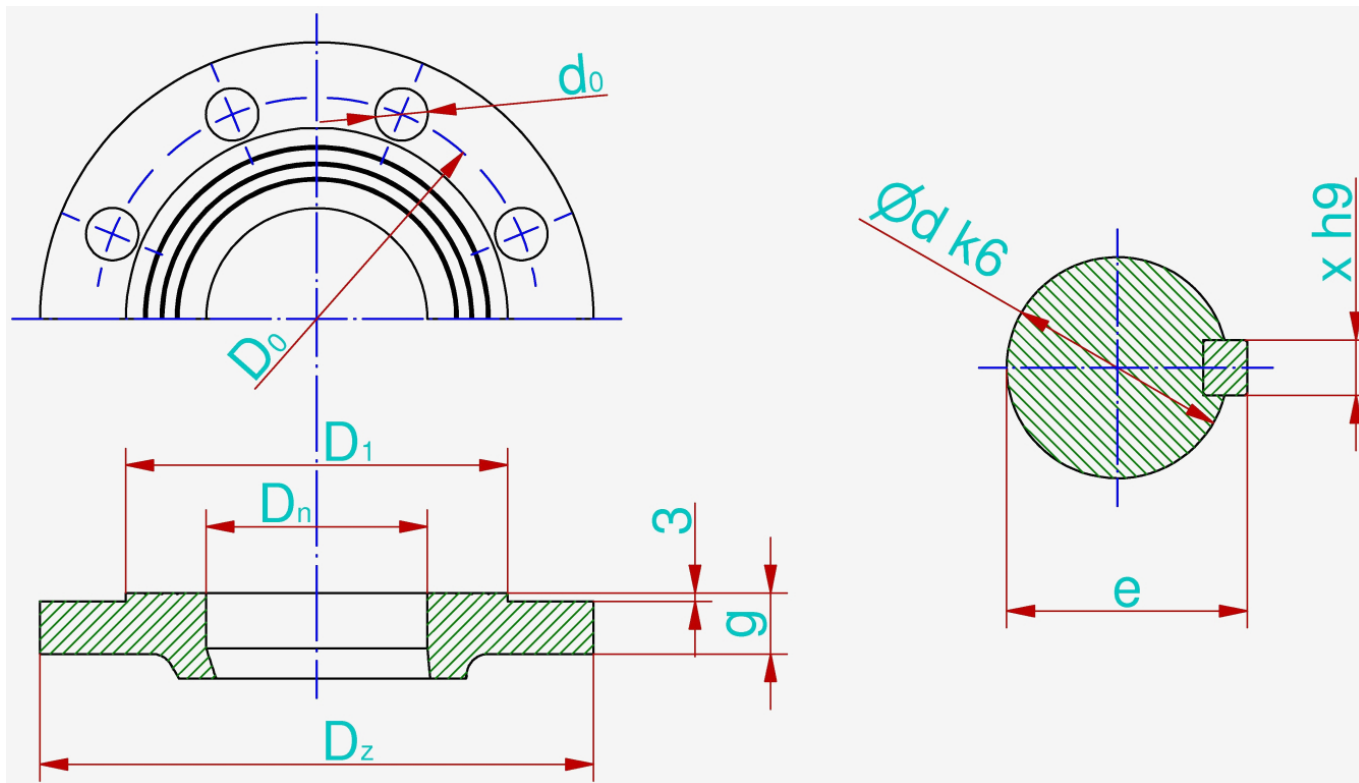
- $P = f(Q)$ - power input acc. to rate flow,
- $\eta = f(Q)$ - efficiency acc. to rate of flow,
- $H_s = f(Q)$ - allowable suction head acc. to rate of flow,
- $NPSH_3 = f(Q)$ - net positive suction head and rate of flow.

MAIN DIMENSIONS OF PUMP



	Number of stages						
	2	3	4	5	6		
a	291	398,5	505,5	612,5	719,5	mm	
b	190	297	404	511	618	mm	
c	944	1051	1158	1265	1372	mm	

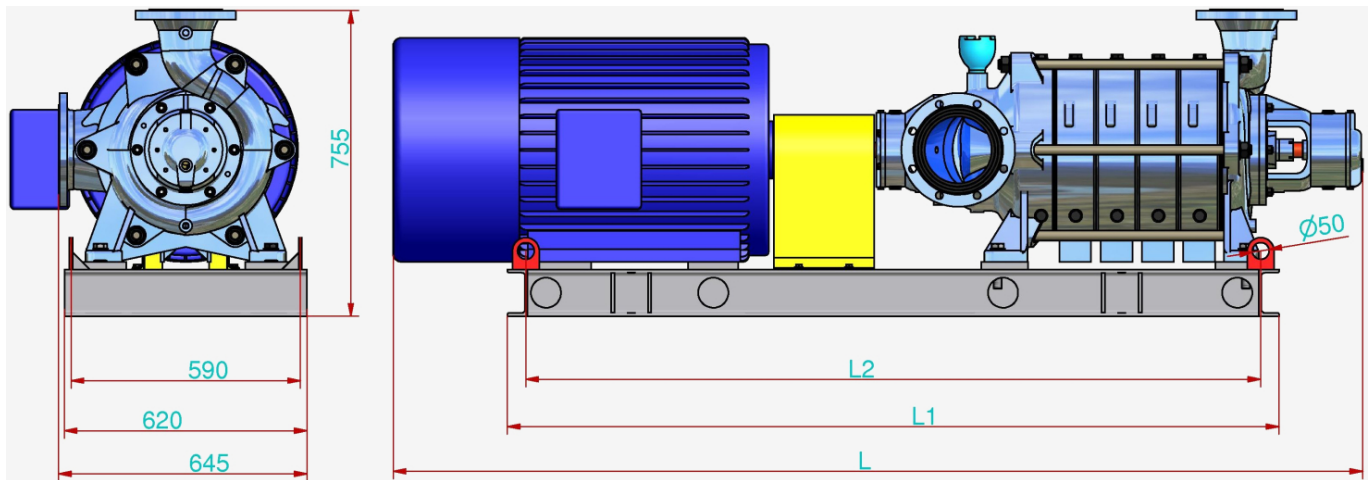
CONNECTION SIZES OF PUMP



	P_n	D_n	i	D_z	d_0	g	D_0	D_1	d	e	x
Suction connector	10	125	8	250	19	24	210	188	-	-	-
Discharge connector	25	100	8	235	23	26	190	162	-	-	-
Shaft / coupling	-	-	-	-	-	-	-	-	35	38	10
	bar	mm	szt	mm	mm	mm	mm	mm	mm	mm	mm

The flanges are normally made in accordance with the standard PN-EN 1092-1 or PN-EN 1092-2.

MAIN DIMENSIONS OF PUMP UNIT



	Number of stages					
	2	3	4	5	6	
L	1780	1940	2050	2210	2470	mm
L₁	1360	1520	1720	1840	2000	mm
L₂	1280	1440	1640	1760	1920	mm
Weight	756	886	1006	1166	1421	kg
Coupling type (Rex Viva)	V150	V150	V170	V190	V215	-
Motor type (Celma)	dSg 200L4-EP	dSg 225S4-EP	dSg 225M4-EP	dSg 250M4-EP	dSg 280S4-EP	-

It is possible to produce pumps with parameters different than those presented in the tables and on the graphs per agreement with the manufacturer.